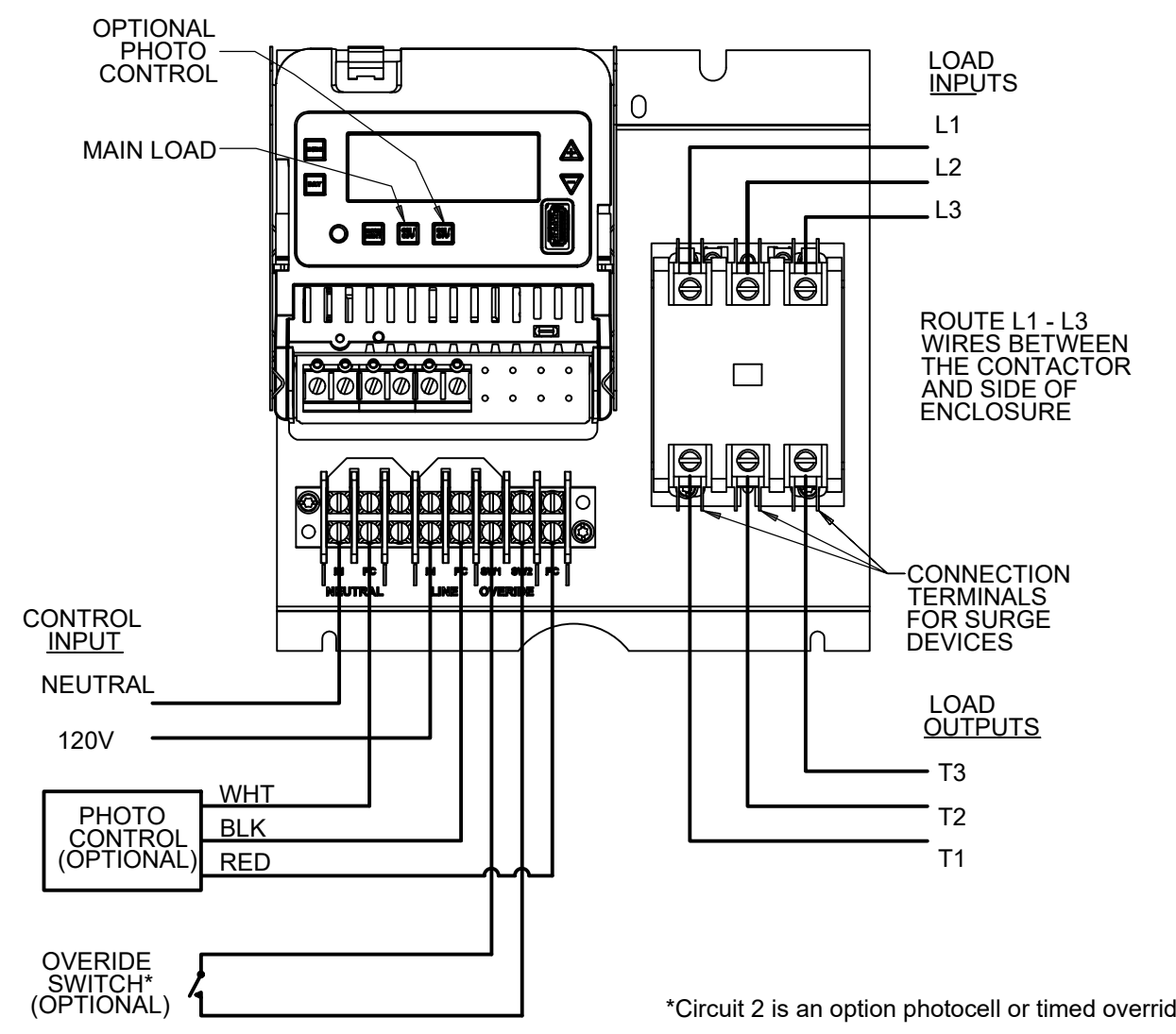


ETCB28253PCR



Specifications

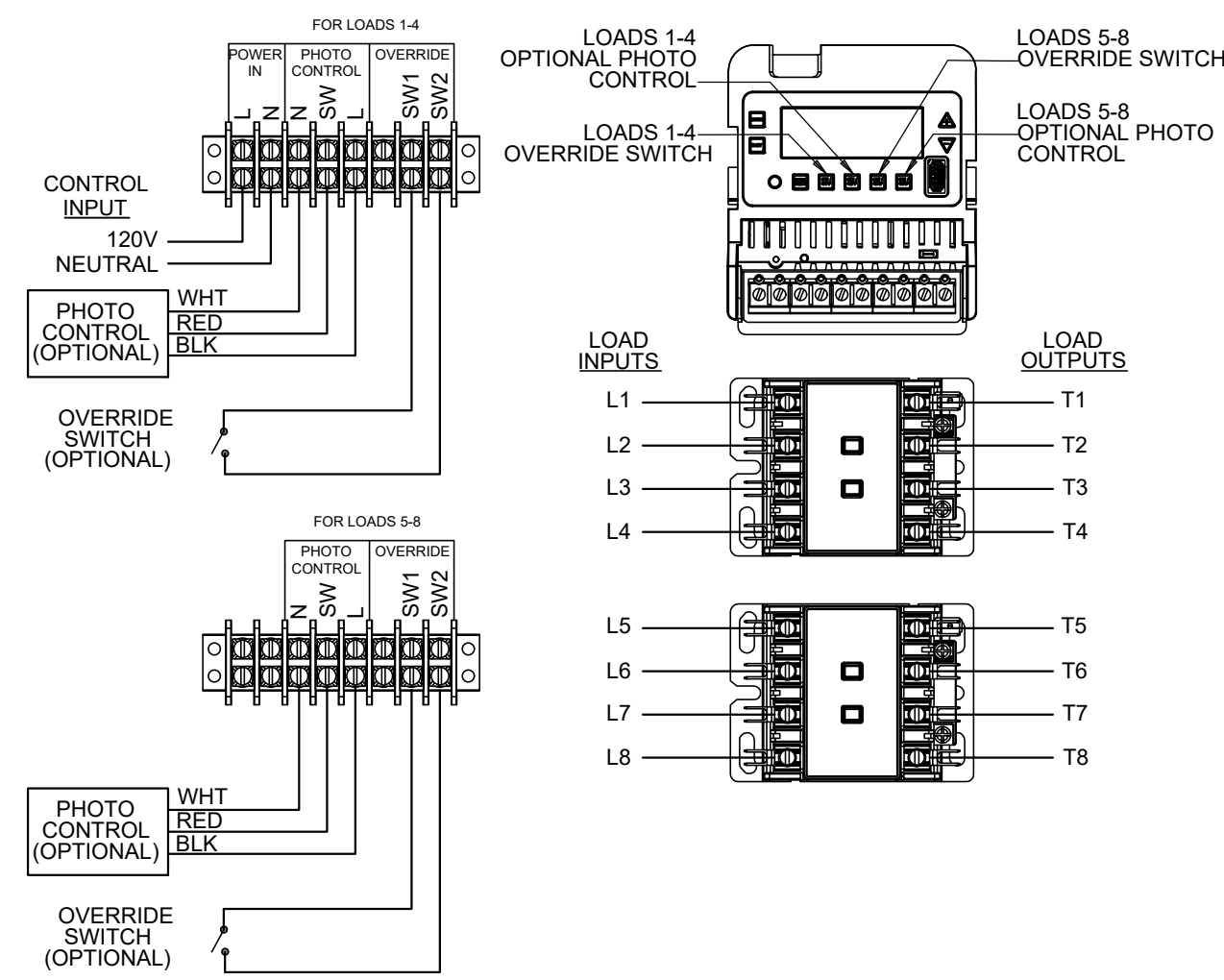
Input Voltage: 120 VAC, 60 Hz
Power Consumption: 5 W MAX
Switch Configuration: See wiring diagrams in this manual.
Switch Ratings:

Rating	Load Type	Voltage
60 FLA	Resistive	120 - 480 VAC, 60 Hz
5HP	Motor	120 VAC, 60 Hz
10 HP	Motor	240 VAC, 60 Hz, Single-Phase
25 HP	Motor	240 VAC, 60 Hz, 3-Phase
30 HP	Motor	480 VAC, 60 Hz, 3-Phase
360 LRA	Motor	240 VAC, 60 Hz
300 LRA	Motor	480 VAC, 60 Hz

Events: Time switch can support up to 48 fixed ON and 48 fixed OFF events along with 1 Astro on and 1 Astro off event per circuit.
Clock Backup: 100-hour Supercapacitor
Wire Size: Control Side Wire Size: #14 - #10 AWG
Contactor Side Wire Size: #14 - #4 AWG
Minimum ON or OFF time: 1 minute
Maximum ON or OFF time: Indefinite
Recharge rate is <= 1.5 Hours (less than or equal to 1.5 hours)
Enclosure: Type 3 Indoor/Outdoor Lockable Metal
Knockouts: See wiring diagram.

*Circuit 2 is an option photocell or timed override

ETCB28458PCR



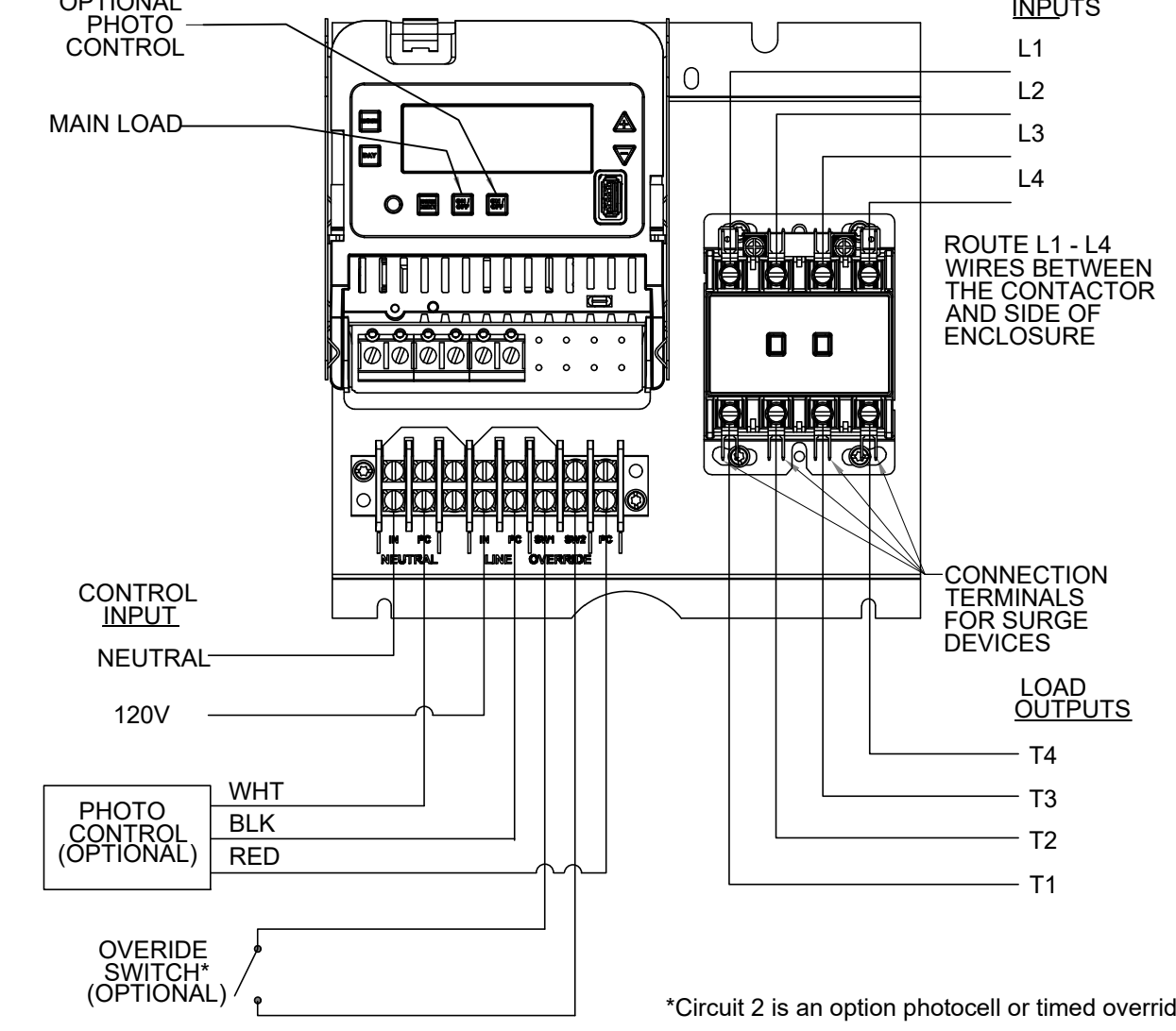
Specifications

Input Voltage: 120 VAC, 60 Hz
Power Consumption: 5 W MAX
Switch Configuration: See wiring diagrams in this manual.
Switch Ratings:

Rating	Load Type	Voltage
40 A	Resistive	120 - 480 VAC, 60 Hz
16 A	Electronic Ballast LED	120 / 277 VAC, 60 Hz
32 A FLA	Motor	240-600 VAC, 60 Hz
180 A LRA	Motor	240/277 VAC, 60 Hz
150 A LRA	Motor	480 VAC, 60 Hz
120 A LRA	Motor	600 VAC, 60 Hz
5HP	Motor	240/277 VAC, 60 Hz, 1-Phase
10 HP	Motor	240/277 VAC, 60 Hz, 3-Phase
15 HP	Motor	480 VAC, 60 Hz, 3-Phase
20 HP	Motor	600 VAC, 60 Hz, 3-Phase

Events: Time switch can support up to 48 fixed ON and 48 fixed OFF events along with 1 Astro on and 1 Astro off event per circuit.
Clock Backup: 100-hour Supercapacitor
Wire Size: Control Side Wire Size: #14 - #10 AWG
Contactor Side Wire Size: #14 - #4 AWG
Minimum ON or OFF time: 1 minute
Maximum ON or OFF time: Indefinite
Recharge rate is <= 1.5 Hours (less than or equal to 1.5 hours)
Enclosure: Type 3 Indoor/Outdoor Lockable Metal
Knockouts: See wiring diagram.

ETCB28254PCR



Specifications

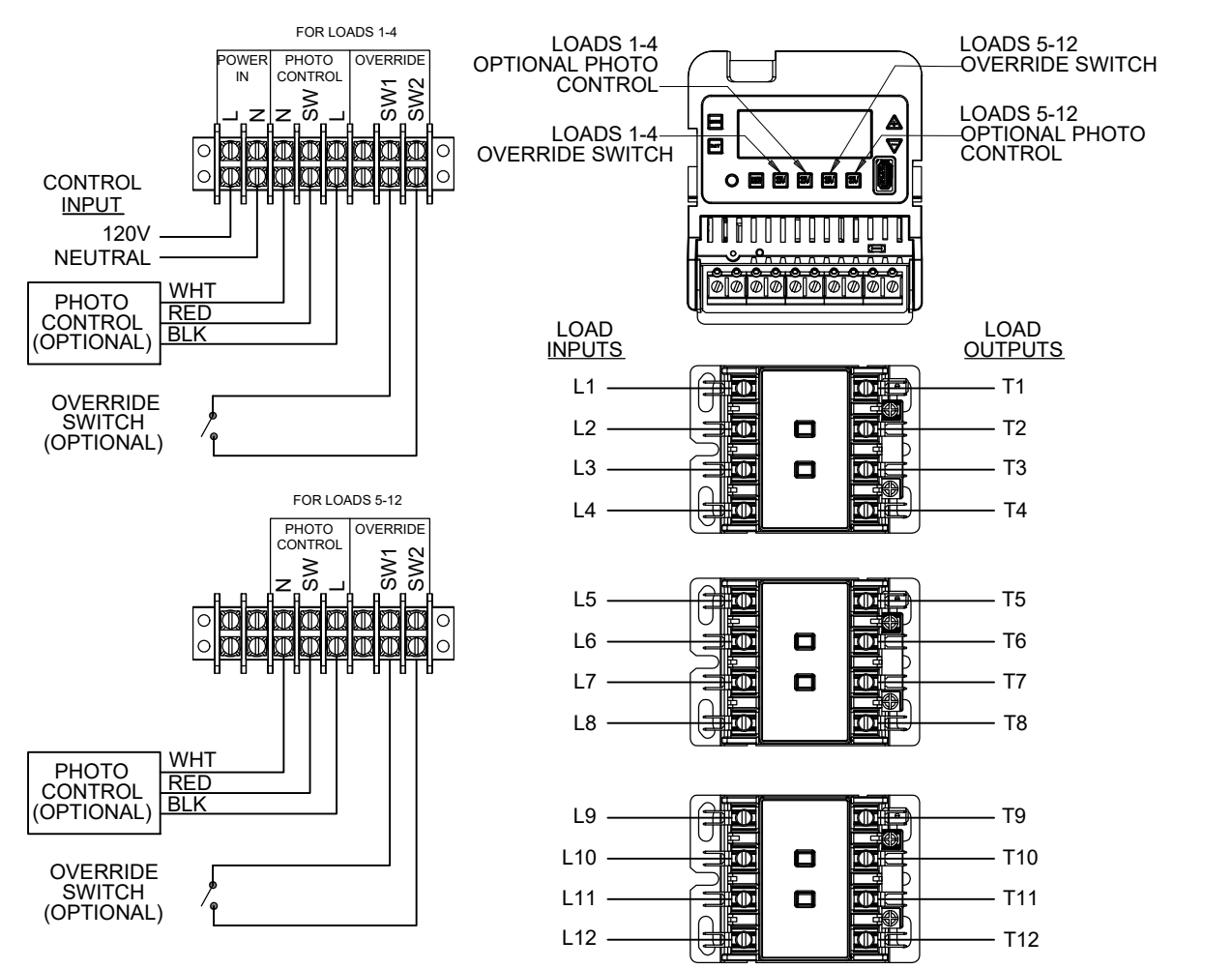
Input Voltage: 120 VAC, 60 Hz
Power Consumption: 5 W MAX
Switch Configuration: See wiring diagrams in this manual.
Switch Ratings:

Rating	Load Type	Voltage
40 A	Resistive	120 - 480 VAC, 60 Hz
16 A	Electronic Ballast LED	120 / 277 VAC, 60 Hz
32 A FLA	Motor	240-600 VAC, 60 Hz
180 A LRA	Motor	240/277 VAC, 60 Hz
150 A LRA	Motor	480 VAC, 60 Hz
120 A LRA	Motor	600 VAC, 60 Hz
5HP	Motor	240/277 VAC, 60 Hz, 1-Phase
10 HP	Motor	240/277 VAC, 60 Hz, 3-Phase
15 HP	Motor	480 VAC, 60 Hz, 3-Phase
20 HP	Motor	600 VAC, 60 Hz, 3-Phase

Events: Time switch can support up to 48 fixed ON and 48 fixed OFF events along with 1 Astro on and 1 Astro off event per circuit.
Clock Backup: 100-hour Supercapacitor
Wire Size: Control Side Wire Size: #14 - #10 AWG
Contactor Side Wire Size: #14 - #4 AWG
Minimum ON or OFF time: 1 minute
Maximum ON or OFF time: Indefinite
Recharge rate is <= 1.5 Hours (less than or equal to 1.5 hours)
Enclosure: Type 3 Indoor/Outdoor Lockable Metal
Knockouts: See wiring diagram.

*Circuit 2 is an option photocell or timed override

ETCB284512PCR



Specifications

Input Voltage: 120 VAC, 60 Hz
Power Consumption: 5 W MAX
Switch Configuration: See wiring diagrams in this manual.
Switch Ratings:

Rating	Load Type	Voltage
32 A	Resistive	120 - 480 VAC, 60 Hz
16 A	Electronic Ballast LED	120 / 277 VAC, 60 Hz
32 A FLA	Motor	240-600 VAC, 60 Hz
180 A LRA	Motor	240/277 VAC, 60 Hz
150 A LRA	Motor	480 VAC, 60 Hz
120 A LRA	Motor	600 VAC, 60 Hz
5HP	Motor	240/277 VAC, 60 Hz, 1-Phase
10 HP	Motor	240/277 VAC, 60 Hz, 3-Phase
15 HP	Motor	480 VAC, 60 Hz, 3-Phase
20 HP	Motor	600 VAC, 60 Hz, 3-Phase

Events: Time switch can support up to 48 fixed ON and 48 fixed OFF events along with 1 Astro on and 1 Astro off event per circuit.
Clock Backup: 100-hour Supercapacitor
Wire Size: Control Side Wire Size: #14 - #10 AWG
Contactor Side Wire Size: #14 - #4 AWG
Minimum ON or OFF time: 1 minute
Maximum ON or OFF time: Indefinite
Recharge rate is <= 1.5 Hours (less than or equal to 1.5 hours)
Enclosure: Type 3 Indoor/Outdoor Lockable Metal
Knockouts: See wiring diagram.

NOTES:

- Follow manufacturer's instructions for proper product placement, installation, wiring and operation.
- Provide proper quantity and type of occupancy sensors, switches, lighting controllers, daylight sensors, etc... per code requirement for each space.
- Install sensors at least four feet away from HVAC supply vents.
- This is a recommended design based on information received by Intermatic.
- Intermatic is not responsible for any differences between design and actual electrical and/or physical space installation.
- Please contact your local representative or Intermatic for product questions regarding this project.

Rev.	Date	Description

Rev.	Date	Description

Project Name	Referenced Sheet Number
Contractor Boxes 2(4-Pole) Contactors	WD

Project Location	Scale	Sheet Number
City, State	N.T.S.	1 of 1