

## Mechanical Time Switch - 24-Hour Mechanical Time Switch, 120 VAC, 60Hz, DPST, Indoor Metal Enclosure, 1 Hour Interval, Mexico Sales Only

Item T103MX



### PRODUCT DESCRIPTION

The T100 Series Mechanical Time Switch has proven it can stand the test of time. These dependable time switches can handle electrical loads up to 40 A per pole and allow for up to 12 ON/OFF operations per day. A manual override switch provides added convenience.

### FEATURES

- ▶ Highest motor load ratings in the industry
- ▶ 12 ON/OFF operations per day
- ▶ One ON and one OFF tripper included
- ▶ Can be installed in most Intermatic enclosures
- ▶ Available with pool heater protection
- ▶ Teeter-type terminals for multiple load connections

### APPLICATIONS

- ▶ Timing/Scheduling ON/OFF
- ▶ Indoor Lighting Control

### TECHNICAL DATA

#### General

Model Number	T103MX
Description	24-Hour Mechanical Time Switch, 120 VAC, 60Hz, DPST, Indoor Metal Enclosure, 1 Hour Interval, Mexico Sales Only
UPC Code	078275000049
Brand	Intermatic
Country of Origin (Intermatic)	MEXICO
Warranty Period	1-Year limited
TARIC HS Code	9107.00.00

#### Control Specifications

Minimum ON/OFF Times	1 hour
Skipper Wheel	Not Included
Operation Mode	24 hour
Has Manual Override	Yes
Application Compatibilities	LED; HID
On Events	12
Off Events	12
Total Events	24

#### Mechanical Specifications

Enclosure Type	Indoor type 1 metal
Number of Trippers Included	1 ON/1 OFF

#### Dimensions

Product Dimensions (H x W x D) in	7.875 x 5.125 x 3.437 in
Wire Size Min	#14 AWG
Wire Size Max	#8 AWG

Knockout Dimensions Bottom	(2) combination 1/2" - 3/4"
Knockout Dimensions Back	(1) combination 1/2" - 3/4"

### Load Ratings

Pilot Duty (NO) Range(s)	1000 VA, 120-277 VAC
Inductive Load Ratings NO Ranges	40 A, 120-277 VAC
Motor Load Ratings NO Ranges	2 HP, 24 FLA @ 120 VAC; 5 HP, 28 FLA @ 240 VAC
Resistive Heater	40 A, 120-277 VAC
Electronic Ballast LED	16 A, 120/277 VAC
Tungsten Incandescent Load Ratings NO Ranges	40 A, 120-277 VAC

### Electrical Specifications

Wiring Option	Terminals
Input Voltage Range(s)	120 VAC, 60 Hz
Number of Circuits	1
Switch Type	DPST
Maximum Power Consumption (W)	3 W
Hz	60

### Packaging

Shipping Weight (lbs)	2.745
Unit Carton Dimensions (H x W x L) in	8.25 x 3.5 x 5.5 in

### Environmental Specifications

Temperature (operation)	-40 °F to 130 °F / (-40 °C to 54 °C)
-------------------------	--------------------------------------

### Standards and Certifications

Other Certifications and Compatibilities	LED; NOM
California Proposition 65	None
RoHS Certification	N/A

**ACCESSORIES**



WG1570-10D

125 VAC, 60 Hz Motor for T101, T103, T105



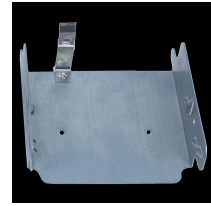
WG1570-10DMX

125 VAC, 60 Hz Motor for T101, T103, T105



156T1957A

3 per package



22T338GR

Mounting Bracket for Intermatic Standardized Timer Mechanisms