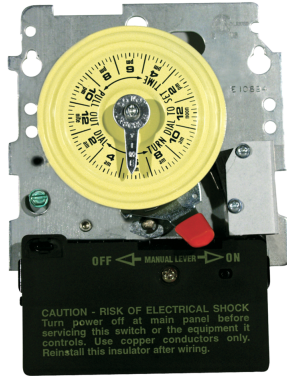


## Mechanical Time Switch - 24-Hour 208-277V Mechanical Time Switch, DPST, Pool Heater Protection, Mechanism Only

Item T104M201



### PRODUCT DESCRIPTION

The T100 Series Mechanical Time Switch has proven it can stand the test of time. These dependable time switches can handle electrical loads up to 40 A per pole and allow for up to 12 ON/OFF operations per day. A manual override switch provides added convenience.

### FEATURES

- ▶ Highest motor load ratings in the industry
- ▶ 12 ON/OFF operations per day
- ▶ One ON and one OFF tripper included
- ▶ Can be installed in most Intermatic enclosures
- ▶ Available with pool heater protection
- ▶ Teeter-type terminals for multiple load connections
- ▶ Can be installed in most Intermatic enclosures

### APPLICATIONS

- ▶ Timing/Scheduling ON/OFF
- ▶ Indoor Lighting Control

### TECHNICAL DATA

General	
Model Number	T104M201
Description	24-Hour 208-277V Mechanical Time Switch, DPST, Pool Heater Protection, Mechanism Only
UPC Code	078275124202
Brand	Intermatic
Country of Origin (Intermatic)	MEXICO
Warranty Period	1-Year limited
TARIC HS Code	9107.00.00
Control Specifications	
Operation Mode	24 hour
Application Compatibilities	LED; HID
On Events	12
Off Events	12
Total Events	24
Mechanical Specifications	
Enclosure Type	N/A - Mechanism only
Number of Trippers Included	1 ON/1 OFF
Material Specifications	
Color	Gray
Load Ratings	
Pilot Duty (NO) Range(s)	1000 VA, 120-277 VAC
Inductive Load Ratings NO Ranges	40 A, 120-277 VAC

Motor Load Ratings NO Ranges	2 HP, 24 FLA @ 120 VAC; 5 HP, 28 FLA @ 240 VAC
Resistive Heater	40 A, 120-480 VAC
Electronic Ballast LED	16 A, 120/277 VAC
Tungsten Incandescent Load Ratings NO Ranges	40 A, 120-240 VAC

#### Electrical Specifications

Heater Control Output	10 A, 250 VAC MAX, 60 Hz
Wiring Option	Terminals
Input Voltage Range(s)	208-277 VAC, 60 Hz
Number of Circuits	2
Switch Type	DPST
Maximum Power Consumption (W)	3 W
Hz	60

#### Packaging

Shipping Weight (lbs)	1.397
Unit Carton Dimensions (H x W x L) in	8.25 x 3.5 x 5.5 in

#### Environmental Specifications

Temperature (operation)	-40 °F to 130 °F / (-40 °C to 54 °C)
-------------------------	--------------------------------------

#### Standards and Certifications

UL Certification	cULus
CSA Certification	cCSAus
Other Certifications and Compatibilities	LED; Green Energy
California Proposition 65	Lead
RoHS Certification	N/A

---

## ACCESSORIES

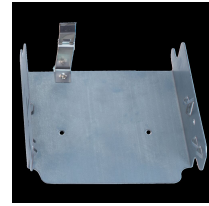


156T1978AMX  
1 Set of ON/OFF Trippers for T100,  
T7000, and WH40

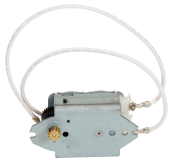
156T1978A  
Extra/replacement trippers 1 ON and 2 Skipper Screws (3 per package)  
OFF



156T1957A



22T338GR  
Mounting Bracket for Intermatic  
Standardized Timer Mechanisms



WG433-20D  
MOTOR-BOXED, 208/277V 60HZ