

Mechanical Time Switch - 24-Hour Mechanical Time Switch with Skip-a-Day, 208-277 VAC, 60Hz, SPST, Indoor Metal Enclosure, 1 Hour Interval

Item T172



PRODUCT DESCRIPTION

Similar to the T100 Series, these time switches can also handle electrical loads up to 40 A per pole. The T170 Series Time Switches allow for up to 10 ON/OFF settings per day, but give you the additional capability of skipping days in which the loads may not be needed. Each time switch will come with one set of ON/OFF trippers as well as three skipper screws to omit the schedule for at least three days.

FEATURES

- ▶ Controls loads up to 40 A per pole
- ▶ Direct 24-hour control of most loads
- ▶ Up to 10 ON/OFF operations each day
- ▶ Minimum ON/OFF times of one hour
- ▶ Manual override
- ▶ One ON and one OFF tripper and three day-skipper screws included

APPLICATIONS

- ▶ Timing/Scheduling ON/OFF
- ▶ Indoor Lighting Control

TECHNICAL DATA

General

Model Number	T172
Description	24-Hour Mechanical Time Switch with Skip-a-Day, 208-277 VAC, 60Hz, SPST, Indoor Metal Enclosure, 1 Hour Interval
UPC Code	078275172210
Brand	Intermatic
Country of Origin (Intermatic)	MEXICO
Warranty Period	1-Year limited
TARIC HS Code	9107.00.00

Control Specifications

Minimum ON/OFF Times	1 hour
Skipper Wheel	24 Hour
Operation Mode	24 hour
Has Manual Override	Yes
Application Compatibilities	LED; HID
On Events	12
Off Events	12
Total Events	24

Mechanical Specifications

Enclosure Type	Indoor type 1 metal
----------------	---------------------

Dimensions

Product Dimensions (H x W x D) in	7.875 x 5.125 x 3.437 in
Wire Size Min	#14 AWG
Wire Size Max	#8 AWG

Material Specifications

Color Gray

Load Ratings

Resistive (NO) Range(s)	40 A, 120-277 VAC
Pilot Duty (NO) Range(s)	1000 VA, 120-277 VAC
Inductive Load Ratings NO Ranges	40 A, 120-277 VAC
Electronic Ballast Load Ratings NO Ranges	16 A, 277 VAC
Motor Load Ratings NO Ranges	2 HP, 24 FLA @ 120 VAC; 5 HP, 28 FLA @ 240 VAC
Tungsten Incandescent Load Ratings NO Ranges	40 A, 120-277 VAC

Electrical Specifications

Wiring Option	Terminals
Input Voltage Range(s)	208-277 VAC, 60 Hz
Number of Circuits	1
Switch Type	SPST
Maximum Power Consumption (W)	3 W
Hz	60

Packaging

Shipping Weight (lbs)	2.744
Unit Carton Dimensions (H x W x L) in	8.25 x 3.5 x 5.5 in

Environmental Specifications

Temperature (operation) -40 °F to 130 °F / (-40 °C to 54 °C)

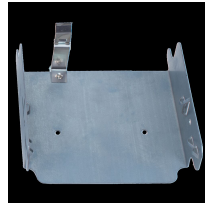
Standards and Certifications

UL Certification	cULus
CSA Certification	cCSAus
Other Certifications and Compatibilities	LED; Green Energy
UL File Number	UL916
California Proposition 65	Lead
RoHS Certification	N/A

ACCESSORIES



156T1948A
Trippers for T170, T1400, T1800
Series Includes 1 ON, 1 OFF, and 1
ON with Skipper Extension



22T338GR
Mounting Bracket for Intermatic
Standardized Timer Mechanisms



124T1948
Insulator for Single-Pole Time Switch
(T101, T102, T171, T172)



156T3085A
Skipper Screws for T170 Series,
T1400 Series, and T1800 Series



WG1571-10D
MOTOR-BOXED, 125V 50HZ



WG1573-10DMX
208-277 VAC, 60 Hz Motor for T102,
T104, T106, T172, T174, T176, WH40



156T1957A
Skipper Screws (3 per package)