

Mechanical Time Switch - 24-Hour Mechanical Time Switch, 208-277 VAC, 60Hz, DPST, Indoor/Outdoor Plastic Enclosure, 1 Hour Interval, Mexico Sales Only

Item T104PMX




PRODUCT DESCRIPTION

The T100 Series Mechanical Time Switch has proven it can stand the test of time. These dependable time switches can handle electrical loads up to 40 A per pole and allow for up to 12 ON/OFF operations per day. A manual override switch provides added convenience.

FEATURES

- ▶ Direct 24-hour control of most loads
- ▶ Up to 12 ON/OFF operations each day with minimum ON/OFF times of one hour
- ▶ Manual override
- ▶ One ON and one OFF tripper included

APPLICATIONS

- ▶ Timing/Scheduling ON/OFF
- ▶ Indoor Lighting Control
- ▶ Outdoor Lighting Control

TECHNICAL DATA

General	
Model Number	T104PMX
Description	24-Hour Mechanical Time Switch, 208-277 VAC, 60Hz, DPST, Indoor/Outdoor Plastic Enclosure, 1 Hour Interval, Mexico Sales Only
UPC Code	078275000162
Brand	Intermatic
Country of Origin (Intermatic)	MEXICO
Warranty Period	1-Year limited
TARIC HS Code	9107.00.00
Control Specifications	
Minimum ON/OFF Times	1 hour
Skipper Wheel	Not Included
Operation Mode	24 hour
Has Manual Override	Yes
Application Compatibilities	LED; HID
On Events	12
Off Events	12
Total Events	24
Mechanical Specifications	
Enclosure Type	Indoor/outdoor type 3R plastic
Number of Trippers Included	1 ON/1 OFF
Dimensions	
Product Dimensions (H x W x D) in	10 x 6.5 x 4 in
Wire Size Min	#14 AWG
Wire Size Max	#8 AWG

Knockout Dimensions Bottom	(2) combination 1/2" - 3/4"
Knockout Dimensions Back	(1) combination 1/2" - 3/4"

Load Ratings

Pilot Duty (NO) Range(s)	1000 VA, 120-277 VAC
Inductive Load Ratings NO Ranges	40 A, 120-277 VAC
Motor Load Ratings NO Ranges	2 HP, 24 FLA @ 120 VAC; 5 HP, 28 FLA @ 240 VAC
Resistive Heater	40 A, 120-480 VAC
Electronic Ballast LED	16 A, 120/277 VAC
Tungsten Incandescent Load Ratings NO Ranges	40 A, 120-277 VAC

Electrical Specifications

Wiring Option	Terminals
Input Voltage Range(s)	208-277 VAC, 60 Hz
Number of Circuits	2
Switch Type	DPST
Maximum Power Consumption (W)	3 W
Hz	60

Packaging

Shipping Weight (lbs)	2.295
Unit Carton Dimensions (H x W x L) in	4 x 7.06 x 11.5 in

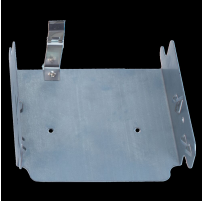
Environmental Specifications

Temperature (operation)	-40 °F to 130 °F / (-40 °C to 54 °C)
-------------------------	--------------------------------------

Standards and Certifications

Other Certifications and Compatibilities	LED; NOM
California Proposition 65	None
RoHS Certification	N/A

ACCESSORIES



22T338GR

Mounting Bracket for Intermatic Standardized Timer Mechanisms