

Mechanical Time Switch - 24-Hour 120V Mechanical Time Switch, SPST, Pool Heater Protection, Type 3R Metal Enclosure

Item T101R201



PRODUCT DESCRIPTION

Heavy-duty mechanical time switches control a single load

FEATURES

- ▶ Highest motor load ratings in the industry
- ▶ 12 ON/OFF operations per day
- ▶ One ON and one OFF tripper included
- ▶ Available with pool heater protection
- ▶ Teeter-type terminals for multiple load connections

APPLICATIONS

- ▶ Heater Thermostat Control
- ▶ Motor Control
- ▶ Pump Control

TECHNICAL DATA

General

Model Number	T101R201
Description	24-Hour 120V Mechanical Time Switch, SPST, Pool Heater Protection, Type 3R Metal Enclosure
UPC Code	078275000063
Brand	Intermatic
Country of Origin (Intermatic)	MEXICO
Warranty Period	1-Year limited
TARIC HS Code	9107.00.00

Control Specifications

Operation Mode	24 hour
Application Compatibilities	HID; LED
On Events	12
Off Events	12
Total Events	24

Mechanical Specifications

Enclosure Type	Outdoor type 3R metal
----------------	-----------------------

Dimensions

Product Dimensions (H x W x D) in	10.125 x 6.5 x 3.625 in
Knockout Dimensions Bottom	(2) 1/2" and 3/4"
Knockout Dimensions Back	1/2" and 3/4" combination

Material Specifications

Color	Beige
-------	-------

Load Ratings

Pilot Duty (NO) Range(s)	1000 VA, 120 VAC
Inductive Load Ratings NO Ranges	40 A, 120 VAC
Motor Load Ratings NO Ranges	2 HP (24 FLA) @ 120 VAC
Resistive Heater	40 A, 120 VAC
Electronic Ballast LED	16 A, 120 VAC
Tungsten Incandescent Load Ratings NO Ranges	40 A, 120 VAC

Electrical Specifications

Heater Control Output	10 A, 250 VAC MAX, 60 Hz
Wiring Option	Terminals
Input Voltage Range(s)	120 VAC, 60 Hz
Number of Circuits	1
Switch Type	SPST
Maximum Power Consumption (W)	3 W
Hz	60
Amperage	40 A

Packaging

Shipping Weight (lbs)	3.493
Unit Carton Dimensions (H x W x L) in	4 x 7.06 x 11.5 in

Environmental Specifications

Temperature (operation)	-40 °F to 130 °F / (-40 °C to 54 °C)
-------------------------	--------------------------------------

Standards and Certifications

UL Certification	cULus
CSA Certification	cCSAus
Other Certifications and Compatibilities	LED; Green Energy
California Proposition 65	Lead
RoHS Certification	N/A

ACCESSORIES



156T1978AMX
1 Set of ON/OFF Trippers for T100,
T7000, and WH40

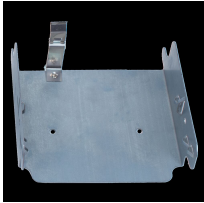
156T1978A
Extra/replacement trippers 1 ON and 2
OFF



124T2411A
Insulator for Mechanical Time
Switches - 10 Pack



156T1957A
Skipper Screws (3 per package)



22T338GR
Mounting Bracket for Intermatic
Standardized Timer Mechanisms



WG430-20D
MOTOR-BOXED, 125V 60HZ