

Mechanical Time Switch - 24-Hour Mechanical Time Switch, 120 VAC, 60Hz, SPST, Indoor Metal Enclosure, 1 Hour Interval, Mexico Sales Only

Item T101MX



PRODUCT DESCRIPTION

The T100 Series Mechanical Time Switch has proven it can stand the test of time. These dependable time switches can handle electrical loads up to 40 A per pole and allow for up to 12 ON/OFF operations per day. A manual override switch provides added convenience.

FEATURES

- ▶ Direct 24-hour control of most loads
- ▶ Up to 12 ON/OFF operations each day with minimum ON/OFF times of one hour
- ▶ Manual override
- ▶ One ON and one OFF tripper included
- ▶ Can be installed in most Intermatic enclosures

APPLICATIONS

- ▶ Timing/Scheduling ON/OFF
- ▶ Indoor Lighting Control

TECHNICAL DATA

General

Model Number	T101MX
Description	24-Hour Mechanical Time Switch, 120 VAC, 60Hz, SPST, Indoor Metal Enclosure, 1 Hour Interval, Mexico Sales Only
UPC Code	078275000018
Brand	Intermatic
Country of Origin (Intermatic)	MEXICO
Warranty Period	1-Year limited
TARIC HS Code	9107.00.00

Control Specifications

Minimum ON/OFF Times	1 hour
Skipper Wheel	Not Included
Operation Mode	24 hour
Has Manual Override	Yes
Application Compatibilities	LED; HID
On Events	12
Off Events	12
Total Events	24

Mechanical Specifications

Enclosure Type	Indoor type 1 metal
Number of Trippers Included	1 ON/1 OFF

Dimensions

Product Dimensions (H x W x D) in	7.875 x 5.125 x 3.437 in
Wire Size Min	#14 AWG
Wire Size Max	#8 AWG

Knockout Dimensions Bottom	(2) combination 1/2" - 3/4"
Knockout Dimensions Back	(1) combination 1/2" - 3/4"

Load Ratings

Pilot Duty (NO) Range(s)	1000 VA, 120 VAC
Inductive Load Ratings NO Ranges	40 A, 120 VAC
Motor Load Ratings NO Ranges	2 HP (24 FLA) @ 120 VAC
Resistive Heater	40 A, 120 VAC
Electronic Ballast LED	16 A, 120 VAC
Tungsten Incandescent Load Ratings NO Ranges	40 A, 120 VAC

Electrical Specifications

Wiring Option	Terminals
Input Voltage Range(s)	120 VAC, 60 Hz
Number of Circuits	1
Switch Type	SPST
Maximum Power Consumption (W)	3 W
Hz	60

Packaging

Shipping Weight (lbs)	2.749
Unit Carton Dimensions (H x W x L) in	8.25 x 3.5 x 5.5 in

Environmental Specifications

Temperature (operation)	-40 °F to 130 °F / (-40 °C to 54 °C)
-------------------------	--------------------------------------

Standards and Certifications

Other Certifications and Compatibilities	LED; NOM
California Proposition 65	None
RoHS Certification	N/A

ACCESSORIES



WG1570-10D

125 VAC, 60 Hz Motor for T101, T103, T105



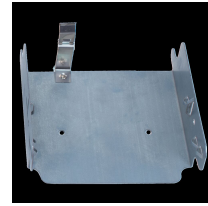
WG1570-10DMX

125 VAC, 60 Hz Motor for T101, T103, T105



156T1957A

3 per package



22T338GR

Mounting Bracket for Intermatic Standardized Timer Mechanisms