

## Item Bundle - 100 A Load Center with T104M & T101M Mechanisms, 8-Breaker Spaces

Item T30401R



### PRODUCT DESCRIPTION

Can be used as a load center only, or add mechanisms or wiring devices for complete control systems.

### FEATURES

- ▶ Eight breaker spaces
- ▶ Reduces installation costs
- ▶ Eliminates the need for additional service panels
- ▶ Fits most of our hard-wired T100 mechanical and PE digital timers
- ▶ Control two-speed pumps with the T30604R
- ▶ Fully compatible with all electrical requirements for pool/spa installations
- ▶ Load center dead front has two knockouts and one on the side for switches or GFCIs
- ▶ Wiring devices may be installed in these load centers with the use of Standoffs, sold separately

### APPLICATIONS

- ▶ Distribution/Control Panel
- ▶ Motor Control
- ▶ Pump Control

### TECHNICAL DATA

General	
Model Number	T30401R
Description	100 A Load Center with T104M & T101M Mechanisms, 8-Breaker Spaces
UPC Code	078275124301
Brand	Intermatic
Country of Origin (Intermatic)	MEXICO
Warranty Period	1-Year limited
Mechanical Specifications	
Number of Breaker Knockouts	8
Enclosure Type	3R Beige metal
Dimensions	
Product Dimensions (H x W x D) in	16.875 x 10.875 x 4.75 in
Knockout Dimensions Bottom	(4) 1/2" - 3/4", (3) 1/2", (2) 3/4" - 1"
Knockout Dimensions Back	(5) 1/2" - 3/4"
Knockout Dimensions Left	(1) 3/4" - 1"
Knockout Dimensions Right	(1) 1 3/4" x 2 3/4"
Material Specifications	
Color	Beige
Load Ratings	
Load Center Ratings	100 A, 120-208 VAC, 60 Hz; 100 A, 240 VAC, 60 Hz, Single Phase
Resistive (NO) Range(s)	40 A, 120-240 VAC
Pilot Duty (NO) Range(s)	1000 VA, 120-240 VAC
Inductive Load Ratings NO Ranges	40 A, 120-240 VAC

Load Center Rating Display	100 A, 120-240 VAC, Single Phase, 60 Hz
Mechanism Supply Voltage	240/120 VAC, 60 Hz
Mechanisms	T104M & T101M
Motor Load Ratings NO Ranges	2 HP, 24 FLA @ 120 VAC; 5 HP, 28 FLA @ 240 VAC
Tungsten Incandescent Load Ratings NO Ranges	40 A, 120-240 VAC

#### Electrical Specifications

Number of Circuits	2
Switch Type	DPST/SPST
Maximum Power Consumption (W)	3 W
Number of Receptacle/Switch Knockouts	2

#### Packaging

Shipping Weight (lbs)	17.209
Unit Carton Dimensions (H x W x L) in	5.751 x 12.001 x 17.751 in

#### Environmental Specifications

Temperature (operation)	-40 °F to 130 °F / (-40 °C to 54 °C)
-------------------------	--------------------------------------

#### Standards and Certifications

CSA Certification	cCSAus
Other Certifications and Compatibilities	Green Energy
California Proposition 65	Lead
RoHS Certification	N/A

**ACCESSORIES**



156T1978AMX  
1 Set of ON/OFF Trippers for T100, T7000, and WH40

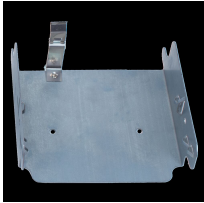
156T1978A  
Extra/replacement trippers 1 ON and 2 Spacer-Standoff, 3" long - 2 pack OFF



21T166A



21T156A  
Spacer-Standoff, 3" long - 4 pack



22T338GR  
Mounting Bracket for Intermatic Standardized Timer Mechanisms

22T713  
Bracket Painted

8--00008A  
Latch-Enclosure

124--00140A  
Pool Panel Breaker Base, 8-pole

156PA13715A  
1" Nonmetallic Hub Kit

24T5796-WWH  
Painted Plate Filler

24T5761-WWH  
Plate, Dead-Front for the T30000 Series