

Mechanical Time Switch - 24-Hour Mechanical Time Switch, 120 VAC, 60Hz, SPST, Indoor/Outdoor Metal Enclosure, 1 Hour Interval

Item T101R



PRODUCT DESCRIPTION

The T100 Series Mechanical Time Switch has proven it can stand the test of time. These dependable time switches can handle electrical loads up to 40 A per pole and allow for up to 12 ON/OFF operations per day. A manual override switch provides added convenience.

FEATURES

- ▶ Direct 24-hour control of most loads
- ▶ Up to 12 ON/OFF operations each day with minimum ON/OFF times of one hour
- ▶ Manual override
- ▶ One ON and one OFF tripper included

APPLICATIONS

- ▶ Timing/Scheduling ON/OFF
- ▶ Indoor Lighting Control
- ▶ Outdoor Lighting Control

TECHNICAL DATA

General	
Model Number	T101R
Description	24-Hour Mechanical Time Switch, 120 VAC, 60Hz, SPST, Indoor/Outdoor Metal Enclosure, 1 Hour Interval
UPC Code	078275000056
Brand	Intermatic
Country of Origin (Intermatic)	MEXICO
Warranty Period	1-Year limited
TARIC HS Code	9107.00.00
Control Specifications	
Minimum ON/OFF Times	1 hour
Skipper Wheel	Not Included
Operation Mode	24 hour
Has Manual Override	Yes
Application Compatibilities	LED; HID
On Events	12
Off Events	12
Total Events	24
Mechanical Specifications	
Enclosure Type	Indoor/outdoor type 3R metal
Number of Trippers Included	1 ON/1 OFF
Dimensions	
Product Dimensions (H x W x D) in	10.125 x 6.5 x 3.625 in
Wire Size Min	#14 AWG
Wire Size Max	#8 AWG

Knockout Dimensions Bottom	(2) combination 1/2" - 3/4"
Knockout Dimensions Back	(1) combination 1/2" - 3/4"

Material Specifications

Color	Gray
-------	------

Load Ratings

Resistive Heater	40 A, 120 VAC
Electronic Ballast LED	16 A, 120 VAC
Pilot Duty (NO) Range(s)	1000 VA, 120 VAC
Inductive Load Ratings NO Ranges	40 A, 120 VAC
Motor Load Ratings NO Ranges	2 HP (24 FLA) @ 120 VAC
Tungsten Incandescent Load Ratings NO Ranges	40 A, 120 VAC

Electrical Specifications

Wiring Option	Terminals
Input Voltage Range(s)	120 VAC, 60 Hz
Number of Circuits	1
Switch Type	SPST
Maximum Power Consumption (W)	3 W
Hz	60

Packaging

Shipping Weight (lbs)	3.393
Unit Carton Dimensions (H x W x L) in	10 x 4 x 6.5 in

Environmental Specifications

Temperature (operation)	-40 °F to 130 °F / (-40 °C to 54 °C)
-------------------------	--------------------------------------

Standards and Certifications

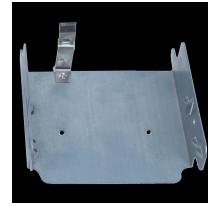
UL Certification	cULus
CSA Certification	cCSAus
Other Certifications and Compatibilities	LED; Green Energy
UL File Number	UL917
California Proposition 65	Lead
RoHS Certification	N/A

ACCESSORIES



156T1978AMX
1 Set of ON/OFF Trippers for T100,
T7000, and WH40

156T1978A
Extra/replacement trippers 1 ON and 2
156T1978AD12
12 Pack of 156T1978A Trippers for
T100, T7000, and WH40



22T338GR
Mounting Bracket for Intermatic
Standardized Timer Mechanisms