

Mechanical Time Switch - 24-Hour 208-277V Mechanical Time Switch, SPDT, Type 3R Plastic Enclosure

Item T106P3



PRODUCT DESCRIPTION

Heavy-duty mechanical time switches control a single load

FEATURES

- ▶ Highest motor load ratings in the industry
- ▶ 12 ON/OFF operations per day
- ▶ One ON and one OFF tripper included
- ▶ Available with pool heater protection
- ▶ Teeter-type terminals for multiple load connections

APPLICATIONS

- ▶ Heater Thermostat Control
- ▶ Motor Control
- ▶ Pump Control
- ▶ Water Circulation

TECHNICAL DATA

General

Model Number	T106P3
Description	24-Hour 208-277V Mechanical Time Switch, SPDT, Type 3R Plastic Enclosure
UPC Code	078275135222
Brand	Intermatic
Country of Origin (Intermatic)	MEXICO
Warranty Period	1-Year limited
TARIC HS Code	9107.00.00

Control Specifications

Operation Mode	24 hour
Application Compatibilities	LED
On Events	12
Off Events	12
Total Events	24

Mechanical Specifications

Enclosure Type	Outdoor type 3R plastic
----------------	-------------------------

Dimensions

Product Dimensions (H x W x D) in	10 x 6.5 x 4 in
Knockout Dimensions Bottom	(2) 1/2" and 3/4"
Knockout Dimensions Back	1/2" and 3/4" combination

Material Specifications

Color	Gray
-------	------

Load Ratings

Resistive (NO) Range(s)	40 A, 120-240 VAC
Pilot Duty (NO) Range(s)	1000 VA, 120-240 VAC
Inductive Load Ratings NO Ranges	40 A, 120-240 VAC
Electronic Ballast Load Ratings NO Ranges	16 A, 208-277 VAC
Motor Load Ratings NO Ranges	2 HP, 24 FLA @ 120 VAC; 5 HP, 28 FLA @ 240 VAC
Tungsten Incandescent Load Ratings NO Ranges	40 A, 120-240 VAC

Electrical Specifications

Heater Control Output	10 A, 250 VAC MAX, 60 Hz
Wiring Option	Terminals
Input Voltage Range(s)	208-277 VAC, 60 Hz
Number of Circuits	1
Switch Type	1 NO/1 NC
Maximum Power Consumption (W)	3 W
Hz	60

Packaging

Shipping Weight (lbs)	2.251
Unit Carton Dimensions (H x W x L) in	10.06 x 4 x 6.56 in

Environmental Specifications

Temperature (operation)	-40 °F to 130 °F / (-40 °C to 54 °C)
-------------------------	--------------------------------------

Standards and Certifications

UL Certification	cULus
CSA Certification	cCSAus
Other Certifications and Compatibilities	LED; Green Energy
California Proposition 65	Lead
RoHS Certification	N/A

ACCESSORIES



156T1978AMX
1 Set of ON/OFF Trippers for T100,
T7000, and WH40

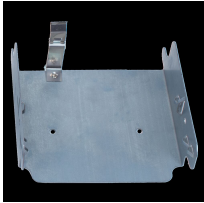
156T1978A
Extra/replacement trippers 1 ON and 2
OFF



124T2411A
Insulator for Mechanical Time
Switches - 10 Pack



156T1957A
Skipper Screws (3 per package)



22T338GR
Mounting Bracket for Intermatic
Standardized Timer Mechanisms



6T1396
Cover, Beige plastic