

In-Wall Timer - 7-Day Heavy-Duty Programmable Timer, 120-277 VAC, 15A, White

Item ST01



PRODUCT DESCRIPTION

Highly versatile heavy-duty timers are ideal for any application that requires a simple or complex ON/OFF schedule, regardless of load. No neutral connection is required. *NOTE: Not for use with sunlamps, saunas, or loads that could cause personal injury if timed incorrectly.

FEATURES

- ▶ Versatile 7-day programmable schedules with up to 40 ON/OFF events.
- ▶ Astronomic clock feature determines dawn and dusk times.
- ▶ Automatic daylight saving time (DST) adjustment.
- ▶ Random mode varies ON/OFF schedule to provide a "lived-in" appearance.
- ▶ Single or 3-way switch compatible. No neutral wire connection enables easy retrofitting and quicker installation.
- ▶ Incandescent/fluorescent/CFL/LED compatible.
- ▶ Isolated switch allows timer to be used with any load type, including AC and DC loads.
- ▶ Replaceable CR2 lithium battery provides up to three years of operation.
- ▶ Decorator switch plate not included.
- ▶ Programmable Countdown feature

APPLICATIONS

- ▶ Indoor Lighting Control
- ▶ Air Movement & Ventilation
- ▶ Outdoor Lighting Control

TECHNICAL DATA

| General | |
|--|--|
| Model Number | ST01 |
| Description | 7-Day Heavy-Duty Programmable Timer, 120-277 VAC, 15A, White |
| UPC Code | 078275127562 |
| Brand | Intermatic |
| Country of Origin (Intermatic) | VIETNAM |
| Warranty Period | 1-Year limited |
| TARIC HS Code | 9107.00.00 |
| Control Specifications | |
| Minimum ON/OFF Times | 1 min |
| Time Presets | Flexible |
| Operation Mode | 24 hour; Countdown |
| Operation Features | Astronomic; Countdown; Daylight Saving Time |
| Countdown Time | 24 hrs |
| Mechanism Type | Digital/Electrical |
| Backup Type | Battery |
| Backup Protection Time | 3 Years |
| Battery Type | CR2 |
| Battery Service Type | Replaceable |
| Application Compatibilities | Incandescent; Fluorescent; CFL; LED |
| Chemical Composition of the Battery Cell | Lithium Manganese Dioxide (LiMnO ₂) |
| Battery Weight (grams) | 11 |
| Number of Lithium-ion Cells in Battery | N/A |

| | |
|--|-----|
| Number of Lithium Metal Cells in Battery | 1 |
| Watt Hours Per Battery | 3.0 |
| Lithium Content (grams) in Battery | 0.5 |
| On Events | 40 |
| Off Events | 40 |
| Total Events | 40 |

Mechanical Specifications

| | |
|---------------------------|-------------|
| Wall Plate Configurations | Single-Gang |
|---------------------------|-------------|

Dimensions

| | |
|-----------------------------------|-------------------------|
| Product Dimensions (H x W x D) in | 4.125 x 1.75 x 1.813 in |
|-----------------------------------|-------------------------|

Material Specifications

| | |
|-------|-------|
| Color | White |
|-------|-------|

Load Ratings

| | |
|--|---|
| Resistive Heater | 15 A, 120-277 VAC |
| Electronic Ballast LED | 5 A, 120 VAC; 2 A, 277 VAC |
| DC Loads | 4 A, 12 VDC; 2 A, 28 VDC |
| Motor Load Ratings Ranges | 1 HP, 120 VAC; 2 HP, 240 VAC |
| Max Load Handling Capability | 15 A |
| Magnetic Ballast (NO) Range(s) | 8 A, 120 VAC; 4 A, 208-277 VAC |
| Inductive Load Ratings NO Ranges | 8 A, 120 VAC; 4 A, 208-277 VAC |
| Tungsten Incandescent Load Ratings NO Ranges | 1800 W, 120 VAC; 1248-1662 W, 208-277 VAC |

Electrical Specifications

| | |
|-----------------------------|-----------------------|
| Input Voltage Range(s) | 120-277 VAC, 50/60 Hz |
| Wiring Configurations | Single; 3-Way |
| Switch Type | SPST-NO |
| Neutral Connection Required | No |
| Hz | 50/60 |
| Amperage | 15 A |

Environmental Specifications

| | |
|-------------------------|-------------------------|
| Temperature (operation) | 32 - 104 °F / 0 - 40 °C |
|-------------------------|-------------------------|

Packaging

| | |
|---------------------------------------|--------------------------|
| Shipping Weight (lbs) | 0.4 |
| Unit Carton Dimensions (H x W x D) in | 4.625 x 2.125 x 2.875 in |

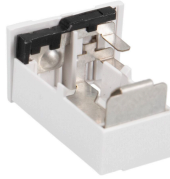
Standards and Certifications

| | |
|--|------------------------|
| UL Certification | cULus |
| Other Certifications and Compatibilities | Title 20; Green Energy |
| California Proposition 65 | DEHP |
| RoHS Certification | N/A |

ACCESSORIES



6ST3058
ST01 White Replacement Door



101ST2209A
ST01 White Replacement Battery Tray