

## Item Bundle - 100 A Load Center with 100 W Transformer and T104M Mechanism, 8-Breaker Spaces

Item T40004RT1



### PRODUCT DESCRIPTION

These mechanical control systems include built-in transformers for ease of installation.

### FEATURES

- ▶ Load Centers have eight breaker spaces
- ▶ All-in-one control power for pool/spa installation
- ▶ Easy to wire
- ▶ Can house additional Intermatic mechanisms and components
- ▶ Control two-speed pumps with the T40604RT3
- ▶ Heavy-duty Type 3R metal indoor/outdoor power and load center
- ▶ Wiring devices may be installed in these Load Centers with the use of Standoffs, sold separately
- ▶ Knockout on the side for additional wiring device

### APPLICATIONS

- ▶ Distribution/Control Panel
- ▶ Landscape Lighting
- ▶ Motor Control
- ▶ Pump Control
- ▶ Underwater Lighting

### TECHNICAL DATA

General	
Model Number	T40004RT1
Description	100 A Load Center with 100 W Transformer and T104M Mechanism, 8-Breaker Spaces
UPC Code	078275023772
Brand	Intermatic
Country of Origin (Intermatic)	MEXICO
Warranty Period	1-Year limited

Mechanical Specifications	
Number of Breaker Knockouts	8
Enclosure Type	3R Beige metal

Dimensions	
Product Dimensions (H x W x D) in	20.875 x 12.875 x 4.75 in
Knockout Dimensions Bottom	(5) 7/8" - 1 7/8", (4) 7/8", (2) 1 1/8" - 1 3/8" - 1 5/8"
Knockout Dimensions Back	(4) 7/8" - 1 1/8", (2) 1 1/8" - 1 3/8"
Knockout Dimensions Left	(2) 7/8" - 1 1/8"
Knockout Dimensions Right	(1) 1 3/4" x 2 3/4"

Material Specifications	
Color	Beige

Load Ratings	
--------------	--

Load Center Ratings	100 A, 120-208 VAC, 60 Hz; 100 A, 240 VAC, 60 Hz, Single Phase
Pilot Duty Load Ratings Ranges	1000 VA, 120-240 VAC, 60 Hz
Load Center Rating Display	100 A, 120-240 VAC, Single Phase, 60 Hz
Mechanism Supply Voltage	240 VAC, 60 Hz
Motor Load Ratings Ranges	2 HP, 24 FLA @ 120 VAC, 60 Hz; 5 HP, 28 FLA @ 240 VAC, 60 Hz
Tungsten Incandescent Load Ratings NO Ranges	40 A, 120-240 VAC

#### Electrical Specifications

Number of Circuits	1
Switch Type	DPST
Maximum Power Consumption (W)	3 W
Transformer (W)	100
Transformer Input Voltage	1 A, 120 VAC, 60 Hz
Transformer Output Voltage	12, 13, 14 VAC
Number of Receptacle/Switch Knockouts	1
Hz	60

#### Packaging

Shipping Weight (lbs)	26.295
Unit Carton Dimensions (H x W x L) in	6 x 14 x 22 in

#### Environmental Specifications

Temperature (operation)	-40 °F to 130 °F / (-40 °C to 54 °C)
-------------------------	--------------------------------------

#### Standards and Certifications

CSA Certification	cCSAus
California Proposition 65	Lead
RoHS Certification	N/A

## ACCESSORIES



156T1978AMX  
1 Set of ON/OFF Trippers for T100,  
T7000, and WH40

156T1978A  
Extra/replacement trippers 1 ON and 2  
OFF



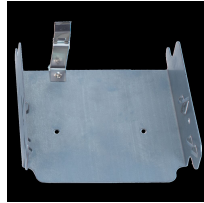
21T166A



21T156A  
Spacer-Standoff, 3" long - 4 pack



ET-NF  
RC Snubber Noise Filter 24-277 VAC  
for Electronic Controls



22T338GR  
Mounting Bracket for Intermatic  
Standardized Timer Mechanisms

24T5796-WWH  
Painted Plate Filler

6T2496A-WWH  
Cover Assembly Painted 12x20  
T40000 Series