

## Item Bundle - Control Panel with T106M & T104M Mechanisms

Item T10604R



### PRODUCT DESCRIPTION

Can be used as a power center only, or add mechanisms or wiring devices for complete control systems.

### FEATURES

- ▶ Available with one or two heavy-duty time switch mechanisms
- ▶ Accepts any combination of PF1000M, P1403ME, P1353ME, P4043ME, P4243ME, T100M or RC2000M Series mechanisms
- ▶ Load center dead front has two knockouts for switches or GFCIs and one on the side
- ▶ Wiring devices may be installed in these load centers with the use of Standoffs, sold separately below
- ▶ Control two-speed pumps with the T10604R

### APPLICATIONS

- ▶ Distribution/Control Panel
- ▶ Motor Control
- ▶ Pump Control

### TECHNICAL DATA

#### General

Model Number	T10604R
Description	Control Panel with T106M & T104M Mechanisms
UPC Code	078275048522
Brand	Intermatic
Country of Origin (Intermatic)	MEXICO
Warranty Period	1-Year limited

#### Mechanical Specifications

Enclosure Type	3R Beige metal
----------------	----------------

#### Dimensions

Product Dimensions (H x W x D) in	12.875 x 10.875 x 4.75 in
Knockout Dimensions Bottom	(5) combination 1/2" - 3/4" and (2) combination 3/4" - 1"
Knockout Dimensions Back	(1) combination 1/2" - 3/4" and (1) 3/4" - 1"
Knockout Dimensions Left	(1) combination 1/2" - 3/4"
Knockout Dimensions Right	(1) 1 3/4" x 2 3/4"

#### Material Specifications

Color	Beige
-------	-------

#### Load Ratings

Pilot Duty Load Ratings Ranges	1000 VA, 120-240 VAC, 60 Hz
Mechanism Supply Voltage	240/240 VAC, 60 Hz
Mechanisms	T106M & T104M
Motor Load Ratings Ranges	2 HP, 24 FLA @ 120 VAC, 60 Hz; 5 HP, 28 FLA @ 240 VAC, 60 Hz
Tungsten Incandescent Load Ratings NO Ranges	40 A, 120-240 VAC

**Electrical Specifications**

Number of Circuits	2
Switch Type	SPDT/DPST
Maximum Power Consumption (W)	3 W
Number of Receptacle/Switch Knockouts	2
Hz	60

**Packaging**

Shipping Weight (lbs)	11.376
Unit Carton Dimensions (H x W x L) in	5.63 x 12.06 x 13.81 in

**Environmental Specifications**

Temperature (operation)	-40 °F to 130 °F / (-40 °C to 54 °C)
-------------------------	--------------------------------------

**Standards and Certifications**

CSA Certification	cCSAus
Other Certifications and Compatibilities	Green Energy
California Proposition 65	Lead
RoHS Certification	N/A

**ACCESSORIES**



156T1978AMX  
1 Set of ON/OFF Trippers for T100,  
T7000, and WH40

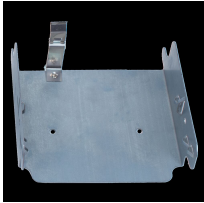
156T1978A  
Extra/replacement trippers 1 ON and 2  
OFF



21T166A  
Spacer-Standoff, 3" long - 2 pack



21T156A  
Spacer-Standoff, 3" long - 4 pack



22T338GR  
Mounting Bracket for Intermatic  
Standardized Timer Mechanisms

22T713  
Bracket Painted

8--00008A  
Latch-Enclosure

24TP6019-WWH  
Painted Plate Dead-Front for the  
T10000 Series

156PA13715A  
1" Nonmetallic Hub Kit

6TP2819A-WWH  
Cover Assembly Painted 10x12  
T10000 Series