

## Mechanical Time Switch -

Item T106P3



### PRODUCT DESCRIPTION

Heavy-duty mechanical time switches control a single load

### FEATURES

- ▶ Highest motor load ratings in the industry
- ▶ 12 ON/OFF operations per day
- ▶ One ON and one OFF tripper included
- ▶ Available with pool heater protection
- ▶ Teeter-type terminals for multiple load connections

### APPLICATIONS

- ▶ Heater Thermostat Control
- ▶ Motor Control
- ▶ Pump Control
- ▶ Water Circulation

### TECHNICAL DATA

#### General

Model Number	T106P3
UPC Code	078275135222
Brand	Intermatic
Country of Origin (Intermatic)	MEXICO
Warranty Period	1-Year limited

#### Control Specifications

Operation Mode	24 hour
Application Compatibilities	LED
On Events	12
Off Events	12
Total Events	24

#### Mechanical Specifications

Enclosure Type	Outdoor type 3R plastic
----------------	-------------------------

#### Dimensions

Product Dimensions (H x W x D) in	10 x 6.5 x 4 in
Knockout Dimensions Bottom	(2) 1/2" and 3/4"
Knockout Dimensions Back	1/2" and 3/4" combination

#### Material Specifications

Color	Gray
-------	------

#### Load Ratings

Electronic Ballast Load Ratings NO Ranges	16 A, 208-277 VAC
Pilot Duty Load Ratings Ranges	1000 VA, 120-240 VAC, 60 Hz
Motor Load Ratings Ranges	2 HP, 24 FLA @ 120 VAC, 60 Hz; 5 HP, 28 FLA @ 240 VAC, 60 Hz

Tungsten Incandescent Load Ratings NO Ranges	40 A, 120-240 VAC
--	-------------------

#### Electrical Specifications

Heater Control Output	10 A, 250 VAC MAX, 60 Hz
Wiring Option	Terminals
Input Voltage Range(s)	208-277 VAC, 60 Hz
Number of Circuits	1
Switch Type	1 NO/1 NC
Maximum Power Consumption (W)	3 W
Hz	60

#### Packaging

Shipping Weight (lbs)	2.251
Unit Carton Dimensions (H x W x L) in	10.06 x 4 x 6.56 in

#### Environmental Specifications

Temperature (operation)	-40 °F to 130 °F / (-40 °C to 54 °C)
-------------------------	--------------------------------------

#### Standards and Certifications

UL Certification	cULus
CSA Certification	cCSAus
Other Certifications and Compatibilities	LED; Green Energy
California Proposition 65	Lead
RoHS Certification	N/A

## ACCESSORIES



156T1978AMX  
1 Set of ON/OFF Trippers for T100,  
T7000, and WH40

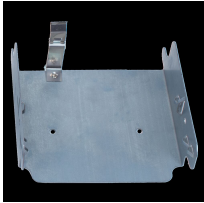
156T1978A  
Extra/replacement trippers 1 ON and 2  
OFF



124T2411A  
Insulator for Mechanical Time  
Switches - 10 Pack



156T1957A  
Skipper Screws (3 per package)



22T338GR  
Mounting Bracket for Intermatic  
Standardized Timer Mechanisms



6T1396  
Cover, Beige plastic