

Item Bundle - 125 A Load Center with T104M Mechanism, 8-Breaker Spaces

Item T40004R



PRODUCT DESCRIPTION

Can be used as a Load Center only, or add mechanisms or wiring devices for complete control systems.

FEATURES

- ▶ Eight breaker spaces
- ▶ Reduces installation costs
- ▶ All-in-one electrical load center eliminates the need for additional service panels
- ▶ Accepts any combination of PF1000M Series, P1403ME, P1353ME, P4043ME, P4243ME, T100M Series or RC2000M Series mechanisms
- ▶ Fully compatible with all electrical requirements for pool/spa installations
- ▶ Load center dead front has four knockouts for switches or GFCIs (Note: T40000R4 has one knockout)
- ▶ Wiring devices may be installed in these Load Centers with the use of Standoffs, sold separately

APPLICATIONS

- ▶ Distribution/Control Panel
- ▶ Motor Control
- ▶ Pump Control

TECHNICAL DATA

General

Model Number	T40004R
Description	125 A Load Center with T104M Mechanism, 8-Breaker Spaces
UPC Code	078275755017
Brand	Intermatic
Country of Origin (Intermatic)	MEXICO
Warranty Period	1-Year limited

Mechanical Specifications

Number of Breaker Knockouts	8
Enclosure Type	3R Beige metal

Dimensions

Product Dimensions (H x W x D) in	20.875 x 12.875 x 4.75 in
Knockout Dimensions Bottom	(5) 1/2" - 3/4", (4) 1/2", (2) 3/4" - 1", 1 1/4"
Knockout Dimensions Back	(4) 1/2" - 3/4", (2) 3/4" - 1"
Knockout Dimensions Left	(2) 1/2" - 3/4"
Knockout Dimensions Right	(1) 1 3/4" x 2 3/4"

Material Specifications

Color	Beige
-------	-------

Load Ratings

Load Center Ratings	125 A, 120-208 VAC, 60 Hz; 125 A, 240 VAC, 60 Hz, Single Phase
Pilot Duty Load Ratings Ranges	1000 VA, 120-240 VAC, 60 Hz
Load Center Rating Display	125 A MAX, 120-240 VAC, Single Phase, 60 Hz

Mechanism Supply Voltage	240 VAC, 60 Hz
Mechanisms	(1) T104M
Motor Load Ratings Ranges	2 HP, 24 FLA @ 120 VAC, 60 Hz; 5 HP, 28 FLA @ 240 VAC, 60 Hz
Tungsten Incandescent Load Ratings NO Ranges	40 A, 120-240 VAC

Electrical Specifications

Number of Circuits	1
Switch Type	DPST
Maximum Power Consumption (W)	3 W
Number of Receptacle/Switch Knockouts	4
Hz	60

Packaging

Shipping Weight (lbs)	20.358
Unit Carton Dimensions (H x W x L) in	6.5 x 14 x 22 in

Environmental Specifications

Temperature (operation)	-40 °F to 130 °F / (-40 °C to 54 °C)
-------------------------	--------------------------------------

Standards and Certifications

CSA Certification	cCSAus
Other Certifications and Compatibilities	Green Energy
California Proposition 65	Lead
RoHS Certification	N/A

ACCESSORIES



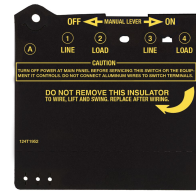
156T1978A
Extra/replacement trippers 1 ON and 2 OFF



21T166A
Spacer-Standoff, 3" long - 2 pack



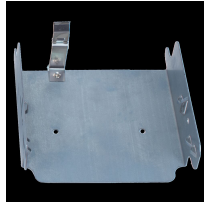
21T156A
Spacer-Standoff, 3" long - 4 pack



124T1952
Insulator for Double-Pole Time Switch (T103, T104, T105, T173, T174, T175, T176, T185, WH40)



WP1000C
Plastic In-Use Weatherproof Cover, Single-Gang, Vrt, 2.25" Clear



22T338GR
Mounting Bracket for Intermatic Standardized Timer Mechanisms

22T713
Bracket Painted

8--00008A
Latch-Enclosure

124--00140A
Pool Panel Breaker Base, 8-pole

24T5741-WWH
Plate, Dead-Front for the T40000 Series

156PA13715A
1" Nonmetallic Hub Kit

24T5796-WWH
Painted Plate Filler

6T2496A-WWH
Cover Assembly Painted 12x20 T40000 Series