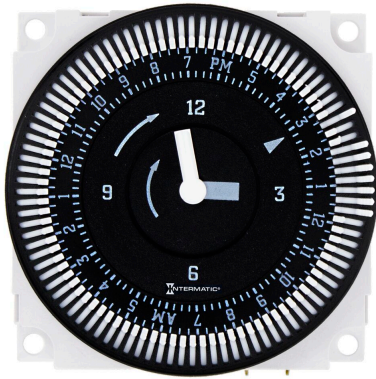


## Graesslin Mechanical Time Switch - 24-Hour 208/240V Electromechanical Panel Mount Timer Module, 15 Minute Intervals, 21A, SPDT, Mexico Sales Only

Item FM1STUZ-240UMX

**NOM**

### PRODUCT DESCRIPTION

The FM1 series timer modules are designed to be integrated inside of a machine control panel, circuit board, or other equipment. They are a simple and low cost alternative for applications that do not require more than 21 A or 2 HP, 240 VAC. The FM1 is designed for 24-hour or 7-day control or overriding a functional typical state of a heating, ventilation, refrigeration, lighting, security, or pump system. The FM1 series is ideal for 12, 24 VAC/VDC, 120 or 208/240VAC single-phase general applications.

### FEATURES

- ▶ 21 A SPDT Switch
- ▶ Captive trippers with 15-minute intervals on 24-hour models and 2-hour intervals on 7-day models
- ▶ 72-hour carry-over battery backup on Q models
- ▶ Noise immune – ideal for robust applications
- ▶ Synchronous drive or quartz drive Q models with self-recharging battery backup
- ▶ True clock face, easy-to-set
- ▶ Available with or without override
- ▶ Compact size
- ▶ Clear plastic cover (DC-FME-A), sold separately
- ▶ Standalone or with indoor/outdoor enclosure, sold separately

### APPLICATIONS

- ▶ Refrigeration Merchandiser
- ▶ Air Movement & Ventilation
- ▶ Aeration
- ▶ Septic Treatment
- ▶ Generator Exercising

### TECHNICAL DATA

General	
Model Number	FM1STUZ-240UMX
Description	24-Hour 208/240V Electromechanical Panel Mount Timer Module, 15 Minute Intervals, 21A, SPDT, Mexico Sales Only
UPC Code	078275152809
Brand	Domestic Intermatic
Country of Origin (Intermatic)	MEXICO
Warranty Period	1-Year limited
Control Specifications	
Maximum Cycle Time	24 hrs
Timing Interval	15 min
Clock Drive Type	Synchronous
Mechanism Type	Electromechanical
Has Captive Trippers	Yes
Has Real-time Clock Face	Yes
Application Compatibilities	Incandescent; Fluorescent; CFL; LED
Mechanical Specifications	
Mounting Options	Panel

**Dimensions**

Product Dimensions (H x W x D) in	2.362 x 2.362 x 1.25 in
-----------------------------------	-------------------------

**Load Ratings**

Motor Load Ratings Ranges	1 HP, 120 VAC; 2 HP, 250 VAC
---------------------------	------------------------------

Tungsten Incandescent Load Ratings NO Ranges	1350 W, 120 VAC
--	-----------------

**Electrical Specifications**

Maximum Power Consumption (VA)	1
--------------------------------	---

Wiring Option	1/4" Quick connect terminals
---------------	------------------------------

Switch Type	SPDT
-------------	------

Hz	60
----	----

**Display and Format**

Shortest switching time	ON/OFF 15 minutes
-------------------------	-------------------

**Packaging**

Shipping Weight (lbs)	0.238
-----------------------	-------

Unit Carton Dimensions (H x W x L) in	2.25 x 3.25 x 3.5 in
---------------------------------------	----------------------

**Environmental Specifications**

Operating Humidity	0 to 95%, Non-condensing
--------------------	--------------------------

Temperature (operation)	-40 °F to 185 °F / (-40 °C to 85 °C)
-------------------------	--------------------------------------

**Standards and Certifications**

Other Certifications and Compatibilities	NOM
--	-----

California Proposition 65	None
---------------------------	------

RoHS Certification	N/A
--------------------	-----