

## Photocontrol - NIGHTFOX EK Series Premium Wall Mount Electronic Photocontrol, 120-277 V

Item EK4336S



### PRODUCT DESCRIPTION

NIGHTFOX EK Series Electronic Photocontrols are designed for permanent installation within single-gang in-wall junction boxes. This premium solution is suitable for use with high-efficiency, long-life LED luminaires. Each control is equipped with 6" color-coded wire leads to ensure reliable and efficient installation.

### FEATURES

- ▶ Non-drift silicon light sensor with IR filter
- ▶ DC relay with zero-crossing circuitry for extended life
- ▶ Conformal coated PCB
- ▶ 15-year design life
- ▶ Exceeds 10,000 ON/OFF switching cycles
- ▶ Fail ON mode
- ▶ Ideal for single or multifixture HID and LED installations (up to 1,650 W @ 277 VAC)
- ▶ 255 J MOV surge protection element
- ▶ Fits standard single-gang in-wall electrical boxes
- ▶ Wall Plate is included

### APPLICATIONS

- ▶ Outdoor Lighting Control

### TECHNICAL DATA

General	
Model Number	EK4336S
Description	NIGHTFOX EK Series Premium Wall Mount Electronic Photocontrol, 120-277 V
UPC Code	078275148314
Brand	Intermatic
Country of Origin (Intermatic)	MEXICO
Warranty Period	8-Year limited

Control Specifications	
Sensor Time Delay	Instant ON; 2 sec to 5 sec OFF
Photocell Type	Silicon Diode
Photo Control Switch Type	Relay
Fail Mode	ON
Activation On	1.5 fc
Activation Off	4.5 fc
Photocontrol Type	Electronic
Application Compatibilities	LED; Incandescent; HID
Photocontrol Style	In-Wall
Photocontrol Sensor Location	Front

Dimensions	
Product Height (in)	2.25
Product Height (mm)	57.2
Product Width (in)	1.313
Product Width (mm)	33.3

Product Depth (in)	1.25
Product Depth (mm)	31.8
Wire Lead Length (in)	6
Wire Lead Length (mm)	152.4
Wire Size Max	#18 AWG
Stem Diameter	3/8"
Stem Thread Size	3/8" - 18
Stem Thread Type	NPSM

#### Material Specifications

Color	Gray
Housing Material	Polycarbonate

#### Load Ratings

Magnetic Ballast (NO) Range(s)	1800 VA
Electronic Ballast Load Ratings NO Ranges	6 A, 120-277 VAC
Tungsten Incandescent Load Ratings NO Ranges	1000 W

#### Electrical Specifications

Wiring Option	Wire leads
Input Voltage Range(s)	120-277 VAC, 50/60 Hz (Nominal Voltage)
Operating Voltage Range(s)	102-305 VAC
Surge Protection Technology	255 J MOV, 5,000 A Surge
Switch Type	SPST
Hz	50/60

#### Packaging

Shipping Weight (lbs)	0.4
Unit Carton Dimensions (H x W x D) in	4.875 x 3.063 x 1.75 in

#### Operating Specifications

Expected Lifetime (Years)	15
Expected Lifetime (Operations)	10000

#### Environmental Specifications

Temperature (operation)	-40 °F to 158 °F / (-40 °C to 70 °C)
Usage Environments	Outdoor

#### Standards and Certifications

UL Certification	cULus
Other Certifications and Compatibilities	Title 20; ANSI C136.24; Green Energy +
California Proposition 65	DEHP
RoHS Certification	Y

---

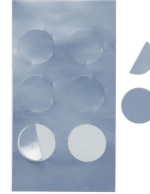
**ACCESSORIES**



6LV1352  
Light Shield Accessory for EK4036S,  
EK4436SM, K4000 Series Button Photocontrols



K43-WP-KIT  
Wall Plate Kit for EK4036S, K4000 Series Button  
Photocontrols



LGLBL  
Lens Sticker Accessory for EK4000 & K4000  
Series Photocontrols