

## Photocontrol - NIGHTFOX EK Series Premium Stem Mount Electronic Photocontrol, 120-277 V

Item EK4136S



### PRODUCT DESCRIPTION

NIGHTFOX EK Series Electronic Photocontrols are designed for permanent installation within outdoor-rated electrical enclosures, in-wall junction boxes, or lighting fixtures. This premium solution is suitable for use with high-efficiency, long-life LED luminaires. The unit mounts externally and requires a minimum enclosure aperture of 7/8" in diameter. Each control is equipped with 6" color-coded wire leads to ensure reliable and efficient installation.

### FEATURES

- ▶ Non-drift silicon light sensor with IR filter
- ▶ DC relay with zero-crossing circuitry for extended life
- ▶ Conformal coated PCB
- ▶ 15-year design life
- ▶ Exceeds 10,000 ON/OFF switching cycles
- ▶ Fail ON mode
- ▶ Ideal for single or multifixture HID and LED installations (up to 1,650 W @ 277 VAC)
- ▶ 255 J MOV surge protection element
- ▶ 1/2"-14 NPSM threaded stem fits standard outlet boxes and wall packs for a minimum installation hole size of 7/8 inch diameter
- ▶ #18 AWG wire leads

### APPLICATIONS

- ▶ Outdoor Lighting Control

### TECHNICAL DATA

| General                        |  |
|--------------------------------|--|
| Model Number                   | EK4136S  |
| Description                    | NIGHTFOX EK Series Premium Stem Mount Electronic Photocontrol, 120-277 V |
| UPC Code                       | 078275146297   |
| Brand                          | Intermatic   |
| Country of Origin (Intermatic) | MEXICO   |
| Warranty Period                | 8-Year limited   |
| Control Specifications         |  |
| Sensor Time Delay              | Instant ON; 2 sec to 5 sec OFF   |
| Photocell Type                 | Silicon Diode  |
| Photo Control Switch Type      | Relay  |
| Fail Mode                      | ON   |
| Activation On                  | 1.5 fc   |
| Activation Off                 | 4.5 fc   |
| Photocontrol Type              | Electronic   |
| Application Compatibilities    | LED; Incandescent; HID   |
| Photocontrol Style             | Stem Mount   |
| Photocontrol Sensor Location   | Side   |
| Dimensions                     |  |
| Product Height (in)            | 2.25   |
| Product Height (mm)            | 57.2   |

|                       |         |
|-----------------------|---------|
| Product Width (in)    | 1.313   |
| Product Width (mm)    | 33.3    |
| Product Depth (in)    | 1.25    |
| Product Depth (mm)    | 31.8    |
| Wire Lead Length (in) | 6       |
| Wire Lead Length (mm) | 152.4   |
| Wire Size Max         | #18 AWG |

#### Material Specifications

|                  |               |
|------------------|---------------|
| Color            | Gray          |
| Housing Material | Polycarbonate |

#### Load Ratings

|  |                  |
|--|------------------|
| Magnetic Ballast (NO) Range(s)               | 1800 VA          |
| Electronic Ballast Load Ratings NO Ranges    | 6 A, 120-277 VAC |
| Tungsten Incandescent Load Ratings NO Ranges | 1000 W           |

#### Electrical Specifications

|                             |   |
|-----------------------------|---|
| Wiring Option               | Wire leads                              |
| Input Voltage Range(s)      | 120-277 VAC, 50/60 Hz (Nominal Voltage) |
| Operating Voltage Range(s)  | 102-305 VAC                             |
| Surge Protection Technology | 255 J MOV, 5,000 A Surge                |
| Hz                          | 50/60                                   |

#### Packaging

|                                       |                     |
|---------------------------------------|---------------------|
| Shipping Weight (lbs)                 | 0.215               |
| Unit Carton Dimensions (H x W x D) in | 4.875 x 3 x 1.75 in |

#### Operating Specifications

|                                |       |
|--------------------------------|-------|
| Expected Lifetime (Years)      | 15    |
| Expected Lifetime (Operations) | 10000 |

#### Environmental Specifications

|                         |                                      |
|-------------------------|--------------------------------------|
| Temperature (operation) | -40 °F to 158 °F / (-40 °C to 70 °C) |
| Usage Environments      | Outdoor                              |

#### Standards and Certifications

|  |  |
|--|--|
| UL Certification                         | cULus                                  |
| Other Certifications and Compatibilities | Title 20; ANSI C136.24; Green Energy + |
| California Proposition 65                | DEHP                                   |
| RoHS Certification                       | Y                                      |

---

## ACCESSORIES



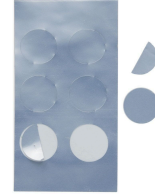
22LG0120  
Light Guard Accessory for EK4000  
Series Electronic Fix Mount  
Photocontrols



6LV1352  
Light Shield Accessory for EK4036S,  
EK4436SM, K4000 Series Button  
Photocontrols



K43-WP-KIT  
Wall Plate Kit for EK4036S, K4000  
Series Button Photocontrols



LGLBL  
Lens Sticker Accessory for EK4000 &  
K4000 Series Photocontrols