

Photocontrol - NIGHTFOX™ Stem Mount Electronic Photocontrol, 120-277 V

Item EK4136SD89



PRODUCT DESCRIPTION

NIGHTFOX™ electronic photocontrols permanently install on outdoor electrical boxes or outdoor lighting fixtures. Ideal for LED fixtures with long-life expectations. 1/2"-14 NPSM threaded stem fits standard outlet boxes and wall packs with 9" wire leads.

FEATURES

- ▶ Non-drift silicon light sensor with IR filter
- ▶ DC relay with zero-crossing circuitry for extended life
- ▶ Conformal coated PCB
- ▶ 15-year design life
- ▶ Exceeds 10,000 ON/OFF switching cycles
- ▶ Fail ON mode
- ▶ Ideal for single or multifixture HID and LED installations (up to 1,650 W @ 277 VAC)
- ▶ 255 J MOV surge protection element
- ▶ 1/2"-14 NPSM threaded stem fits standard outlet boxes and wall packs
- ▶ #18 AWG wire leads

TECHNICAL DATA

General	
Model Number	EK4136SD89
Description	NIGHTFOX™ Stem Mount Electronic Photocontrol, 120-277 V
UPC Code	078275146297
Brand	Intermatic
Country of Origin (Intermatic)	MEXICO
Warranty Period	8-Year limited

Control Specifications	
Sensor Time Delay	Instant ON; 2 sec to 5 sec OFF
Photocell Type	Silicon Diode
Photo Control Switch Type	Relay
Fail Mode	ON
Activation On	1.5 fc
Activation Off	4.5 fc
Photocontrol Type	Electronic
Application Compatibilities	LED; Incandescent; HID
Photocontrol Style	Stem Mount
Photocontrol Sensor Location	Side

Dimensions	
Product Height (in)	2.25
Product Height (mm)	57.2
Product Width (in)	1.3125
Product Width (mm)	33.3
Product Depth (in)	1.25
Product Depth (mm)	31.8
Wire Lead Length (in)	6
Wire Lead Length (mm)	152.4

Wire Size Max #18 AWG

Material Specifications

Color	Gray
Housing Material	Polycarbonate

Load Ratings

Electronic Ballast Load Ratings NO Ranges	6 A, 120-277 VAC
Tungsten Incandescent Load Ratings NO Ranges	1000 W

Electrical Specifications

Wiring Option	Wire leads
Input Voltage Range(s)	120-277 VAC, 50/60 Hz
Surge Protection Technology	255 J MOV, 5,000 A Surge
Hz	50/60

Packaging

Shipping Weight (lbs)	0.215
Unit Carton Dimensions (H x W x D) in	4.875 x 3 x 1.75 in

Operating Specifications

Expected Lifetime (Years)	15
Expected Lifetime (Operations)	10000

Environmental Specifications

Temperature (operation)	-40 °F to 158 °F / (-40 °C to 70 °C)
Usage Environments	Outdoor

Standards and Certifications

UL Certification	cULus
CSA Certification	cCSAus
Other Certifications and Compatibilities	Title 20; ANSI C136.24; Green Energy +
California Proposition 65	DEHP
RoHS Certification	Y

ACCESSORIES



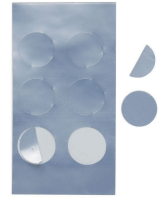
22LG0120
Light Guard Accessory for EK4000
Series Electronic Fix Mount
Photocontrols



6LV1352
Light Shield Accessory for EK4036S,
EK4436SM, K4000 Series Button
Photocontrols



K43-WP-KIT
Wall Plate Kit for EK4036S, K4000
Series Button Photocontrols



LGLBL
Lens Sticker Accessory for EK4000 &
K4000 Series Photocontrols