

In-Wall Timer -

Item EI600C



PRODUCT DESCRIPTION

Highly versatile heavy-duty timers are ideal for any application that requires a simple or complex ON/OFF schedule, regardless of load. No neutral connection is required. *NOTE: Not for use with sunlamps, saunas, or loads that could cause personal injury if timed incorrectly. Wall plate not included.

FEATURES

- ▶ Versatile 7-day programmable schedules with up to 40 ON/OFF events.
- ▶ Astronomic clock feature determines dawn and dusk times.
- ▶ Automatic daylight saving time (DST) adjustment.
- ▶ Random mode varies ON/OFF schedule to provide a "lived-in" appearance.
- ▶ Single or 3-way switch compatible. No neutral wire connection enables easy retrofitting and quicker installation.
- ▶ Incandescent/fluorescent/CFL/LED compatible.
- ▶ Isolated switch allows timer to be used with any load type, including AC and DC loads.
- ▶ Replaceable CR2 lithium battery provides up to three years of operation.
- ▶ Decorator switch plate not included.
- ▶ Programmable Countdown feature

APPLICATIONS

- ▶ Indoor Lighting Control
- ▶ Air Movement & Ventilation
- ▶ Outdoor Lighting Control

TECHNICAL DATA

General	
Model Number	EI600C
UPC Code	078275101401
Brand	Intermatic
Country of Origin (Intermatic)	VIETNAM
Warranty Period	5-Year limited
Control Specifications	
Time Presets	Flexible
Operation Mode	24 hour; Countdown
Operation Features	Astronomic; Countdown; Daylight Saving Time
Countdown Time	24 hrs
Mechanism Type	Digital/Electrical
Backup Type	Battery
Backup Protection Time	3 Years
Battery Type	CR2
Battery Service Type	Replaceable
Minimum ON/OFF Times	1 min
Application Compatibilities	Incandescent; Fluorescent; CFL; LED
Chemical Composition of the Battery Cell	Lithium Manganese Dioxide (LiMnO ₂)
Number of Batteries Included	1
Battery Weight (grams)	11
Number of Lithium-ion Cells in Battery	N/A
Number of Lithium Metal Cells in Battery	1

Watt Hours Per Battery	3.0
Lithium Content (grams) in Battery	0.5
On Events	40
Off Events	40
Total Events	40

Mechanical Specifications

Wall Plate Configurations	Single-Gang
---------------------------	-------------

Dimensions

Product Dimensions (H x W x D) in	4.125 x 1.75 x 1.813 in
-----------------------------------	-------------------------

Material Specifications

Color	Ivory
Includes Wall Plate	No

Load Ratings

Resistive Heater	20 A, 120-277 VAC
Electronic Ballast LED	5 A, 120 VAC; 2 A, 277 VAC
DC Loads	4 A, 12 VDC; 2 A, 28 VDC
Motor Load Ratings Ranges	1 HP, 120 VAC; 2 HP, 240 VAC
Max Load Handling Capability	20 A

Electrical Specifications

Input Voltage Range(s)	120-277 VAC, 50/60 Hz
Wiring Configurations	Single; 3-Way
Neutral Connection Required	No
Hz	50/60
Amperage	20 A

Environmental Specifications

Temperature (operation)	32 - 104 °F / 0 - 40 °C
-------------------------	-------------------------

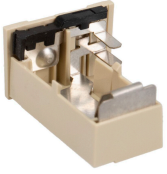
Packaging

Shipping Weight (lbs)	0.472
Unit Carton Dimensions (H x W x D) in	4.88 x 3 x 2.13 in

Standards and Certifications

UL Certification	cULus
Other Certifications and Compatibilities	Title 20; Green Energy
California Proposition 65	DEHP
RoHS Certification	N/A

ACCESSORIES



101ST2207A
EI600C Ivory Replacement Battery Tray



6ST3056
ST01 Ivory Replacement Door