

Mechanical Time Switch -

Item T104



PRODUCT DESCRIPTION

The T100 Series Mechanical Time Switch has proven it can stand the test of time. These dependable time switches can handle electrical loads up to 40 A per pole and allow for up to 12 ON/OFF operations per day. A manual override switch provides added convenience.

FEATURES

- ▶ Direct 24-hour control of most loads
- ▶ Up to 12 ON/OFF operations each day with minimum ON/OFF times of one hour
- ▶ Manual override
- ▶ One ON and one OFF tripper included
- ▶ Can be installed in most Intermatic enclosures

APPLICATIONS

- ▶ Timing/Scheduling ON/OFF
- ▶ Indoor Lighting Control

TECHNICAL DATA

General

Model Number	T104
UPC Code	078275000025
Brand	Intermatic
Country of Origin (Intermatic)	MEXICO
Warranty Period	1-Year limited

Control Specifications

Minimum ON/OFF Times	1 hour
Skipper Wheel	Not Included
Timing Interval	1 hr
Operation Mode	24 hour
Has Manual Override	Yes
Application Compatibilities	LED; HID
On Events	12
Off Events	12
Total Events	24

Mechanical Specifications

Enclosure Type	Indoor type 1 metal
Number of Trippers Included	1 ON/1 OFF

Dimensions

Product Dimensions (H x W x D) in	7.875 x 5.125 x 3.437 in
Wire Size Min	#14 AWG
Wire Size Max	#8 AWG
Knockout Dimensions Bottom	(2) combination 1/2" - 3/4"
Knockout Dimensions Back	(1) combination 1/2" - 3/4"

Material Specifications

Color	Gray
-------	------

Load Ratings

Tungsten Range(s)	40 A, 120-277 VAC, 60 Hz
Electronic Ballast Load Ratings NO Ranges	16 A, 120-277 VAC
Pilot Duty Load Ratings Ranges	1000 VA, 120-277 VAC, 60 Hz
Motor Load Ratings Ranges	2 HP, 24 FLA @ 120 VAC, 60 Hz; 5 HP, 28 FLA @ 240 VAC, 60 Hz

Electrical Specifications

Wiring Option	Terminals
Input Voltage Range(s)	208-277 VAC, 60 Hz
Number of Circuits	2
Switch Type	DPST
Maximum Power Consumption (W)	3 W
Hz	60

Packaging

Shipping Weight (lbs)	2.744
Unit Carton Dimensions (H x W x L) in	8.25 x 3.5 x 5.5 in

Environmental Specifications

Temperature (operation)	-40 °F to 130 °F / (-40 °C to 54 °C)
-------------------------	--------------------------------------

Standards and Certifications

UL Certification	cULus
CSA Certification	cCSAus
Other Certifications and Compatibilities	LED; Green Energy
UL File Number	UL917
California Proposition 65	Lead
RoHS Certification	N/A

ACCESSORIES



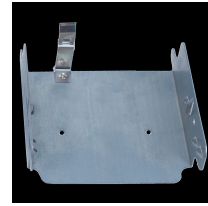
156T1978AMX
1 Set of ON/OFF Trippers for T100, T7000, and WH40



156T1978A
Extra/replacement trippers 1 ON and 2 OFF



156T1978AD12
12 Pack of 156T1978A Trippers for T100, T7000, and WH40



22T338GR
Mounting Bracket for Intermatic Standardized Timer Mechanisms



124T1952
Insulator for Double-Pole Time Switch (T103, T104, T105, T173, T174, T175, T176, T185, WH40)



WG1571-10D
MOTOR-BOXED, 125V 50HZ



WG1573-10DMX
208-277 VAC, 60 Hz Motor for T102, T104, T106, T172, T174, T176, WH40



156T1957A
Skipper Screws (3 per package)