

Mechanical Time Switch -

Item T105



PRODUCT DESCRIPTION

The T100 Series Mechanical Time Switch has proven it can stand the test of time. These dependable time switches can handle electrical loads up to 40 A per pole and allow for up to 12 ON/OFF operations per day. A manual override switch provides added convenience.

FEATURES

- ▶ Direct 24-hour control of most loads
- ▶ Up to 12 ON/OFF operations each day with minimum ON/OFF times of one hour
- ▶ Manual override
- ▶ One ON and one OFF tripper included
- ▶ Can be installed in most Intermatic enclosures

APPLICATIONS

- ▶ Timing/Scheduling ON/OFF
- ▶ Indoor Lighting Control

TECHNICAL DATA

General

Model Number	T105
UPC Code	078275800106
Brand	Intermatic
Country of Origin (Intermatic)	MEXICO
Warranty Period	1-Year limited

Control Specifications

Minimum ON/OFF Times	1 hour
Skipper Wheel	Not Included
Operation Mode	24 hour
Has Manual Override	Yes
Application Compatibilities	LED; HID
On Events	12
Off Events	12
Total Events	24

Mechanical Specifications

Enclosure Type	Indoor type 1 metal
Number of Trippers Included	1 ON/1 OFF

Dimensions

Product Dimensions (H x W x D) in	7.875 x 5.125 x 3.625 in
Wire Size Min	#14 AWG
Wire Size Max	#8 AWG
Knockout Dimensions Bottom	(2) combination 1/2" - 3/4"
Knockout Dimensions Back	(1) combination 1/2" - 3/4"

Material Specifications

Color Gray

Load Ratings

Tungsten Range(s)	40 A, 120 VAC, 60 Hz
Electronic Ballast Load Ratings NO Ranges	16 A, 120 VAC
Pilot Duty Load Ratings Ranges	1000 VA, 120 VAC, 60 Hz
Motor Load Ratings Ranges	2 HP, 24 FLA @ 120 VAC, 60 Hz

Electrical Specifications

Wiring Option	Terminals
Input Voltage Range(s)	120 VAC, 60 Hz
Number of Circuits	1
Switch Type	1 NO/1 NC; SPDT
Maximum Power Consumption (W)	3 W
Hz	60
Amperage	40 A

Packaging

Shipping Weight (lbs)	2.744
Unit Carton Dimensions (H x W x L) in	8.25 x 3.5 x 5.5 in

Environmental Specifications

Temperature (operation)	-40 °F to 130 °F / (-40 °C to 54 °C)
-------------------------	--------------------------------------

Standards and Certifications

UL Certification	cULus
CSA Certification	cCSAus
Other Certifications and Compatibilities	LED; Green Energy
UL File Number	UL917
California Proposition 65	Lead
RoHS Certification	N/A

ACCESSORIES



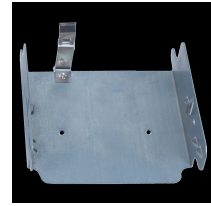
156T1978AMX
1 Set of ON/OFF Trippers for T100, T7000, and WH40



156T1978A
Extra/replacement trippers 1 ON and 2 OFF



156T1978AD12
12 Pack of 156T1978A Trippers for T100, T7000, and WH40



22T338GR
Mounting Bracket for Intermatic Standardized Timer Mechanisms



124T1952
Insulator for Double-Pole Time Switch (T103, T104, T105, T173, T174, T175, T105 T176, T185, WH40)



WG1570-10D
125 VAC, 60 Hz Motor for T101, T103,



WG1570-10DMX
125 VAC, 60 Hz Motor for T101, T103, T105



156T1957A
Skipper Screws (3 per package)