

GR_Digital Time Switches - Digital timer, 7-Day or 24-Hr programming, 230 VAC, 50/60 Hz, Electronic Surface Mount Module, 16 A, 20 Setpoint Programs, 2 channels, SPDT - TCC 372.1Plus 192

Item 036200021



PRODUCT DESCRIPTION

The universal time switches from the TCC product family offer versatility in the entire building and in the outdoor area. They are used in switching systems, in machine control systems, as well as specific solutions such as swimming pools or sprinkler systems. The digital universal time switches from the TCC plus series are available both as 1-channel and 2-channel variants. They are suitable for assembly, installation and DIN rail mounting and are additionally distinguished by simple programming.

FEATURES

- ▶ 24-hour or 7-day applications
- ▶ 20 set point programs
- ▶ Three preset adjustable block programs
- ▶ Menu driven programming
- ▶ Manual override with status indicator
- ▶ Battery backup
- ▶ 2-channel control

APPLICATIONS

- ▶ Aeration
- ▶ Agriculture Feeders
- ▶ Air Movement & Ventilation
- ▶ Distribution/Control Panel
- ▶ Greenhouse Misting Control
- ▶ Landscape Lighting
- ▶ Landscape Water Control
- ▶ Machinery & Pump Controls
- ▶ Motor Control
- ▶ Outdoor Lighting Control
- ▶ Pool Pump
- ▶ Pump Control
- ▶ Septic Treatment
- ▶ Timing/Scheduling ON/OFF

TECHNICAL DATA

General

Model Number	036200021
Description	Digital timer, 7-Day or 24-Hr programming, 230 VAC, 50/60 Hz, Electronic Surface Mount Module, 16 A, 20 Setpoint Programs, 2 channels, SPDT - TCC 372.1Plus 192
Country of Origin (Intermatic)	CHINA
Warranty Period	1-Year limited
TARIC HS Code	9107.00.00

Control Specifications

Backup Protection Time	3 Years
Mechanism Type	Digital/Electrical

Dimensions

Product Dimensions (H x W x D) mm	72 x 72 x 37.5 mm
Product Dimensions (H x W x D) in	2.83 x 2.83 x 1.48 in

Material Specifications

Color	Gray
-------	------

Electrical Specifications

Input Voltage Range(s)	230 VAC \pm 10%, 50/60 Hz
Accuracy	\pm 1 Second /Day at 20°C
Current Output	Changeover, Potential-free
Input Voltage Frequencies	50-60 Hz
Hz	50/60

Display and Format

Shortest switching time	ON/OFF 1 minute
Summer/winter time	Manual Summer/Winter Time Change
Clock Display Types	Digital

Packaging

Shipping Weight (kg)	0.454
Shipping Weight (lbs)	1
Product Weight (kg)	0.288
Product Weight (lbs)	0.634
Unit Carton Dimensions (H x W x D) in	1 x 1 x 1 in

Operating Specifications

Manual switch	Automatic Mode; Fix ON/OFF
Memory Spaces	20
Program	Daily Program (ON/OFF); Menu Programming with Free and Fixed Programs; Set Individual Days or Week Day Block Formation; Weekly Program (ON/OFF)

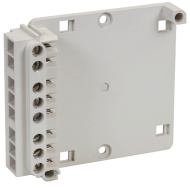
Environmental Specifications

Temperature (operation)	-10 - 55 °C / 14 - 131 °F
-------------------------	---------------------------

Standards and Certifications

Other Certifications and Compatibilities	CE; REACH
California Proposition 65	None
RoHS Certification	Y

ACCESSORIES



035200032
Base, 2-Channel, TCCPlus Series



035200066
Catch Frame, 2-Channel, TCCPlus Series