

## GR\_Digital Time Switches - Digital timer, 7-Day or 24-Hr programming, 230 VAC, 50/60 Hz, Electronic Surface Mount Module, 16 A, 50 Setpoint Programs, 2 channels, SPDT - TCC 572.1Plus 192

Item 038700031



### PRODUCT DESCRIPTION

The universal time switches from the TCC product family offer versatility in the entire building and in the outdoor area. They are used in switching systems, in machine control systems, as well as specific solutions such as swimming pools or sprinkler systems. The digital universal time switches from the TCC plus series are available both as 1-channel and 2-channel variants. They are suitable for assembly, installation and DIN rail mounting and are additionally distinguished by simple programming.

### FEATURES

- ▶ 24-hour or 7-day applications
- ▶ 50 preset programs
- ▶ Three preset adjustable block programs
- ▶ Menu driven programs
- ▶ Manual override with status indicator
- ▶ Battery backup
- ▶ 2 channel operation

### APPLICATIONS

- ▶ Aeration
- ▶ Agriculture Feeders
- ▶ Air Movement & Ventilation
- ▶ Distribution/Control Panel
- ▶ Greenhouse Misting Control
- ▶ Landscape Lighting
- ▶ Landscape Water Control
- ▶ Machinery & Pump Controls
- ▶ Motor Control
- ▶ Outdoor Lighting Control
- ▶ Pool Pump
- ▶ Pump Control
- ▶ Septic Treatment
- ▶ Timing/Scheduling ON/OFF

### TECHNICAL DATA

#### General

Model Number	038700031
Description	Digital timer, 7-Day or 24-Hr programming, 230 VAC, 50/60 Hz, Electronic Surface Mount Module, 16 A, 50 Setpoint Programs, 2 channels, SPDT - TCC 572.1Plus 192
Country of Origin (Intermatic)	CHINA
Warranty Period	1-Year limited
TARIC HS Code	9107.00.00

#### Control Specifications

Menu Languages	German; Hungarian; Czech; Italian; English; Portuguese; French; Spanish
Backup Protection Time	3 Years
Mechanism Type	Digital/Electrical

#### Dimensions

Product Dimensions (H x W x D) mm	72 x 72 x 61 mm
-----------------------------------	-----------------

Product Dimensions (H x W x D) in	2.83 x 2.83 x 2.4 in
-----------------------------------	----------------------

#### Material Specifications

Color	Gray
-------	------

#### Electrical Specifications

Input Voltage Range(s)	230 VAC $\pm$ 10%, 50/60 Hz
Accuracy	$\pm$ 1 Second /Day at 20°C
Current Output	Changeover, Potential-free
Input Voltage Frequencies	50-60 Hz
Hz	50/60

#### Display and Format

Shortest switching time	ON/OFF 1 minute
Summer/winter time	Automatic Summer/Winter Time Change; Can Be Deactivated
Clock Display Types	Digital

#### Packaging

Shipping Weight (kg)	0.207
Shipping Weight (lbs)	0.456
Product Weight (kg)	0.258
Product Weight (lbs)	0.569
Unit Carton Dimensions (H x W x D) in	2.693 x 3.212 x 2.942 in

#### Operating Specifications

Manual switch	Automatic Mode; Fix ON/OFF
Memory Spaces	50
Program	Daily Program (ON/OFF); Free Weekday Block Formation; Weekly Program (ON/OFF)

#### Environmental Specifications

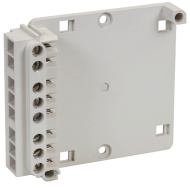
Temperature (operation)	-10 - 55 °C / 14 - 131 °F
-------------------------	---------------------------

#### Standards and Certifications

Other Certifications and Compatibilities	CE; REACH
RoHS Certification	Y

---

## ACCESSORIES



035200032  
Base, 2-Channel, TCCPlus Series



035200066  
Catch Frame, 2-Channel, TCCPlus Series