

## Mechanical Time Switch -

Item T101PMX



### PRODUCT DESCRIPTION

The T100 Series Mechanical Time Switch has proven it can stand the test of time. These dependable time switches can handle electrical loads up to 40 A per pole and allow for up to 12 ON/OFF operations per day. A manual override switch provides added convenience.

### FEATURES

- ▶ Direct 24-hour control of most loads
- ▶ Up to 12 ON/OFF operations each day with minimum ON/OFF times of one hour
- ▶ Manual override
- ▶ One ON and one OFF tripper included

### APPLICATIONS

- ▶ Timing/Scheduling ON/OFF
- ▶ Indoor Lighting Control
- ▶ Outdoor Lighting Control

### TECHNICAL DATA

#### General

Model Number	T101PMX
UPC Code	078275000193
Brand	Intermatic
Country of Origin (Intermatic)	MEXICO
Warranty Period	1-Year limited

#### Control Specifications

Minimum ON/OFF Times	1 hour
Skipper Wheel	Not Included
Operation Mode	24 hour
Has Manual Override	Yes
Application Compatibilities	LED; HID
On Events	12
Off Events	12
Total Events	24

#### Mechanical Specifications

Enclosure Type	Indoor/outdoor type 3R plastic
Number of Trippers Included	1 ON/1 OFF

#### Dimensions

Product Dimensions (H x W x D) in	10 x 6.5 x 4 in
Wire Size Min	#14 AWG
Wire Size Max	#8 AWG
Knockout Dimensions Bottom	(2) combination 1/2" - 3/4"
Knockout Dimensions Back	(1) combination 1/2" - 3/4"

#### Load Ratings

Tungsten Range(s)	40 A, 120 VAC, 60 Hz
Electronic Ballast Load Ratings NO Ranges	16 A, 120 VAC
Pilot Duty Load Ratings Ranges	1000 VA, 120 VAC, 60 Hz
Motor Load Ratings Ranges	2 HP, 24 FLA @ 120 VAC, 60 Hz

#### Electrical Specifications

Wiring Option	Terminals
Input Voltage Range(s)	120 VAC, 60 Hz
Number of Circuits	1
Switch Type	SPST
Maximum Power Consumption (W)	3 W
Hz	60

#### Packaging

Shipping Weight (lbs)	2.453
Unit Carton Dimensions (H x W x L) in	4 x 7.06 x 11.5 in

#### Environmental Specifications

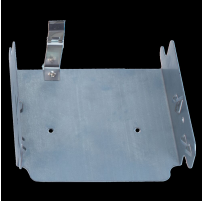
Temperature (operation)	-40 °F to 130 °F / (-40 °C to 54 °C)
-------------------------	--------------------------------------

#### Standards and Certifications

Other Certifications and Compatibilities	LED; NOM
California Proposition 65	None
RoHS Certification	N/A

---

## ACCESSORIES



22T338GR

Mounting Bracket for Intermatic Standardized Timer Mechanisms