

## Mechanical Time Switch -

Item T104PMX



### PRODUCT DESCRIPTION

The T100 Series Mechanical Time Switch has proven it can stand the test of time. These dependable time switches can handle electrical loads up to 40 A per pole and allow for up to 12 ON/OFF operations per day. A manual override switch provides added convenience.

### FEATURES

- ▶ Direct 24-hour control of most loads
- ▶ Up to 12 ON/OFF operations each day with minimum ON/OFF times of one hour
- ▶ Manual override
- ▶ One ON and one OFF tripper included

### APPLICATIONS

- ▶ Timing/Scheduling ON/OFF
- ▶ Indoor Lighting Control
- ▶ Outdoor Lighting Control

### TECHNICAL DATA

#### General

Model Number	T104PMX
UPC Code	078275000162
Brand	Intermatic
Country of Origin (Intermatic)	MEXICO
Warranty Period	1-Year limited

#### Control Specifications

Minimum ON/OFF Times	1 hour
Skipper Wheel	Not Included
Operation Mode	24 hour
Has Manual Override	Yes
Application Compatibilities	LED; HID
On Events	12
Off Events	12
Total Events	24

#### Mechanical Specifications

Enclosure Type	Indoor/outdoor type 3R plastic
Number of Trippers Included	1 ON/1 OFF

#### Dimensions

Product Dimensions (H x W x D) in	10 x 6.5 x 4 in
Wire Size Min	#14 AWG
Wire Size Max	#8 AWG
Knockout Dimensions Bottom	(2) combination 1/2" - 3/4"
Knockout Dimensions Back	(1) combination 1/2" - 3/4"

#### Load Ratings

Tungsten Range(s)	40 A, 120-277 VAC, 60 Hz
Inductive	40 A, 277 VAC, 60 Hz; 40 A, 240 VAC, 60 Hz; 40 A, 208 VAC, 60 Hz; 40 A, 120 VAC, 60 Hz
Electronic Ballast Load Ratings NO Ranges	16 A, 120-277 VAC
Inductive Load Ratings Ranges	40 A, 120-277 VAC, 60 Hz
Pilot Duty Load Ratings Ranges	1000 VA, 120-277 VAC, 60 Hz
Motor Load Ratings Ranges	2 HP, 24 FLA @ 120 VAC, 60 Hz; 5 HP, 28 FLA @ 240 VAC, 60 Hz

#### Electrical Specifications

Wiring Option	Terminals
Input Voltage Range(s)	208-277 VAC, 60 Hz
Number of Circuits	2
Switch Type	DPST
Maximum Power Consumption (W)	3 W
Hz	60

#### Packaging

Shipping Weight (lbs)	2.295
Unit Carton Dimensions (H x W x L) in	4 x 7.06 x 11.5 in

#### Environmental Specifications

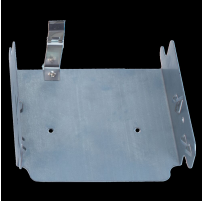
Temperature (operation)	-40 °F to 130 °F / (-40 °C to 54 °C)
-------------------------	--------------------------------------

#### Standards and Certifications

Other Certifications and Compatibilities	LED; NOM
California Proposition 65	None
RoHS Certification	N/A

---

## ACCESSORIES



22T338GR

Mounting Bracket for Intermatic Standardized Timer Mechanisms