

Photocontrol - NIGHTFOX EK Series Premium Button Mount Electronic Photocontrol, 347 V

Item EK4027S



PRODUCT DESCRIPTION

NIGHTFOX EK Series Electronic Photocontrols are designed for permanent installation within outdoor-rated electrical enclosures, in-wall junction boxes, or lighting fixtures. This premium solution is suitable for use with high-efficiency, long-life LED luminaires. The unit mounts internally and requires a minimum enclosure aperture of 5/8" in diameter. Each control is equipped with 6" color-coded wire leads to ensure reliable and efficient installation.

FEATURES

- ▶ Non-drift silicon light sensor with IR filter
- ▶ DC relay with zero-crossing circuitry for extended life
- ▶ Conformal coated PCB
- ▶ 15-year design life
- ▶ Exceeds 10,000 ON/OFF switching cycles
- ▶ Fail ON mode
- ▶ Ideal for single or multifixture HID and LED installations
- ▶ 220 J MOV surge protection element
- ▶ Mounts internally to enclosure
- ▶ Features 3/8" - 18 NPSM thread for a minimum installation hole size of 5/8 inch diameter

APPLICATIONS

- ▶ Outdoor Lighting Control

TECHNICAL DATA

General	
Model Number	EK4027S
Description	NIGHTFOX EK Series Premium Button Mount Electronic Photocontrol, 347 V
UPC Code	078275152366
Brand	Intermatic
Country of Origin (Intermatic)	MEXICO
Warranty Period	8-Year limited
Control Specifications	
Sensor Time Delay	Instant ON; 2 sec to 5 sec OFF
Photocell Type	Silicon Diode
Photo Control Switch Type	Relay
Fail Mode	ON
Activation On	1.5 fc
Activation Off	4.5 fc
Photocontrol Type	Electronic
Application Compatibilities	LED; Incandescent; HID
Photocontrol Style	Button
Photocontrol Sensor Location	Front
Dimensions	
Product Height (in)	2.25
Product Height (mm)	57.2
Product Width (in)	1.313
Product Width (mm)	33.3

Product Depth (in)	1.25
Product Depth (mm)	31.8
Wire Lead Length (in)	6
Wire Lead Length (mm)	152.4
Wire Size Max	#18 AWG

Material Specifications

Color	Gray
Housing Material	Polycarbonate

Load Ratings

Tungsten Range(s)	1000 W
Magnetic Ballast (NO) Range(s)	1800 VA
Electronic Ballast Load Ratings NO Ranges	2 A

Electrical Specifications

Wiring Option	Wire leads
Input Voltage Range(s)	347 VAC, 50/60 Hz
Surge Protection Technology	220 J MOV, 5,000 A Surge
Hz	50/60

Packaging

Shipping Weight (lbs)	0.196
Unit Carton Dimensions (H x W x D) in	4.875 x 3 x 1.75 in

Operating Specifications

Expected Lifetime (Years)	15
Expected Lifetime (Operations)	10000

Environmental Specifications

Temperature (operation)	-40 °F to 158 °F / (-40 °C to 70 °C)
Usage Environments	Outdoor

Standards and Certifications

UL Certification	cULus
Other Certifications and Compatibilities	ANSI C136.24; Green Energy +
California Proposition 65	Nickel; DEHP
RoHS Certification	N

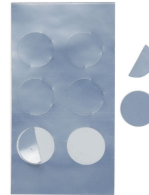
ACCESSORIES



6LV1352
Light Shield Accessory for EK4036S,
EK4436SM, K4000 Series Button Photocontrols



K43-WP-KIT
Wall Plate Kit for EK4036S, K4000 Series Button
Photocontrols



LGLBL
Lens Sticker Accessory for EK4000 & K4000
Series Photocontrols