

## Photocontrol - NIGHTFOX™ Stem Mount Electronic Photocontrol, 120-277 V

Item EK4136SD89



### PRODUCT DESCRIPTION

NIGHTFOX™ electronic photocontrols permanently install on outdoor electrical boxes or outdoor lighting fixtures. Ideal for LED fixtures with long-life expectations. 1/2"-14 NPSM threaded stem fits standard outlet boxes and wall packs with 9" wire leads.

### FEATURES

- ▶ Non-drift silicon light sensor with IR filter
- ▶ DC relay with zero-crossing circuitry for extended life
- ▶ Conformal coated PCB
- ▶ 15-year design life
- ▶ Exceeds 10,000 ON/OFF switching cycles
- ▶ Fail ON mode
- ▶ Ideal for single or multifixture HID and LED installations (up to 1,650 W @ 277 VAC)
- ▶ 255 J MOV surge protection element
- ▶ 1/2"-14 NPSM threaded stem fits standard outlet boxes and wall packs
- ▶ #18 AWG wire leads

### TECHNICAL DATA

General	
Model Number	EK4136SD89
Description	NIGHTFOX™ Stem Mount Electronic Photocontrol, 120-277 V
UPC Code	078275146297
Brand	Intermatic
Country of Origin (Intermatic)	MEXICO
Warranty Period	8-Year limited

Control Specifications	
Sensor Time Delay	Instant ON; 2 sec to 5 sec OFF
Photocell Type	Silicon Diode
Photo Control Switch Type	Relay
Fail Mode	ON
Activation On	1.5 fc
Activation Off	4.5 fc
Photocontrol Type	Electronic
Application Compatibilities	LED; Incandescent; HID
Photocontrol Style	Stem Mount
Photocontrol Sensor Location	Side

Dimensions	
Product Height (in)	2.25
Product Height (mm)	57.2
Product Width (in)	1.3125
Product Width (mm)	33.3
Product Depth (in)	1.25
Product Depth (mm)	31.8
Wire Lead Length (in)	6
Wire Lead Length (mm)	152.4

Wire Size Max #18 AWG

#### Material Specifications

Color	Gray
Housing Material	Polycarbonate

#### Load Ratings

Incandescent Load Ratings Ranges	1000 W, 120-277 VAC, 50/60 Hz
Tungsten Range(s)	1000 W
Inductive	1800 VA, 120 VAC, 50 Hz; 1800 VA, 208 VAC, 50 Hz; 1800 VA, 240 VAC, 50 Hz; 1800 VA, 277 VAC, 50 Hz; 1800 VA, 120 VAC, 60 Hz; 1800 VA, 208 VAC, 60 Hz; 1800 VA, 240 VAC, 60 Hz; 1800 VA, 277 VAC, 60 Hz
Electronic Ballast Load Ratings NO Ranges	6 A, 120-277 VAC, 50/60 Hz
Inductive Load Ratings Ranges	1800 VA, 120-277 VAC, 50/60 Hz

#### Electrical Specifications

Wiring Option	Wire leads
Input Voltage Range(s)	120-277 VAC, 50/60 Hz
Surge Protection Technology	255 J MOV, 5,000 A Surge
Hz	50/60

#### Packaging

Shipping Weight (lbs)	0.215
Unit Carton Dimensions (H x W x D) in	4.875 x 3 x 1.75 in

#### Operating Specifications

Expected Lifetime (Years)	15
Expected Lifetime (Operations)	10000

#### Environmental Specifications

Temperature (operation)	-40 °F to 158 °F / (-40 °C to 70 °C)
Usage Environments	Outdoor

#### Standards and Certifications

UL Certification	cULus
CSA Certification	cCSAus
Other Certifications and Compatibilities	Title 20; ANSI C136.24; Green Energy +
California Proposition 65	DEHP
RoHS Certification	Y

---

## ACCESSORIES



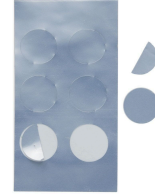
22LG0120  
Light Guard Accessory for EK4000  
Series Electronic Fix Mount  
Photocontrols



6LV1352  
Light Shield Accessory for EK4036S,  
EK4436SM, K4000 Series Button  
Photocontrols



K43-WP-KIT  
Wall Plate Kit for EK4036S, K4000  
Series Button Photocontrols



LGLBL  
Lens Sticker Accessory for EK4000 &  
K4000 Series Photocontrols