

Photocontrol - Button Thermal Photocontrol, 120 V, Mexico Sales Only

Item K4021CMX



NOM

PRODUCT DESCRIPTION

These photocontrols install within lighting fixtures, post lamps, or in-wall boxes to provide dusk-to-dawn ON/OFF control of outdoor lighting.

FEATURES

- ▶ Mechanical bimetal switch with Cadmium Sulfide photocell
- ▶ Compact size fits into standard outlet box, post lamp, wall pack and other lighting fixtures
- ▶ Delay feature prevents unwanted OFF switching
- ▶ 3/8"-18 NPSM, 3/4" long stem with locking nut and washer gasket

APPLICATIONS

- ▶ Outdoor Lighting Control

TECHNICAL DATA

| General | |
|--------------------------------|---|
| Model Number | K4021CMX |
| Description | Button Thermal Photocontrol, 120 V, Mexico Sales Only |
| UPC Code | 078275002005 |
| Brand | Intermatic |
| Country of Origin (Intermatic) | MEXICO |
| Warranty Period | 2-Year limited |
| Control Specifications | |
| Sensor Time Delay | 30 sec to 90 sec |
| Photocell Type | Cadmium Sulfide |
| Photo Control Switch Type | Mechanical Bimetal |
| Fail Mode | ON |
| Activation On | 1 to 5 fc |
| Activation Off | 3 to 15 fc |
| Photocontrol Type | Thermal |
| Application Compatibilities | HID; Fluorescent; Incandescent |
| Photocontrol Style | Button |
| Photocontrol Sensor Location | Front |
| Dimensions | |
| Product Height (in) | 1.813 |
| Product Height (mm) | 46 |
| Product Width (in) | 0.937 |
| Product Width (mm) | 23.8 |
| Product Depth (in) | 0.813 |
| Product Depth (mm) | 20.6 |
| Wire Lead Length (in) | 9 |
| Wire Lead Length (mm) | 228.6 |
| Wire Size Max | #18 AWG |

Material Specifications

| | |
|------------------|---------------|
| Color | Gray |
| Housing Material | Polycarbonate |

Load Ratings

| | |
|--------------------------------|----------------|
| Tungsten Range(s) | 15 A, 1800 W |
| Magnetic Ballast (NO) Range(s) | 8.3 A, 1000 VA |

Electrical Specifications

| | |
|------------------------|-------------------|
| Wiring Option | Wire leads |
| Input Voltage Range(s) | 120 VAC, 50/60 Hz |
| Hz | 50/60 |

Packaging

| | |
|---------------------------------------|--------------------|
| Shipping Weight (lbs) | 0.25 |
| Unit Carton Dimensions (H x W x D) in | 4.88 x 1.75 x 3 in |

Operating Specifications

| | |
|--------------------------------|------|
| Expected Lifetime (Years) | 5 |
| Expected Lifetime (Operations) | 3650 |

Environmental Specifications

| | |
|-------------------------|--------------------------------------|
| Temperature (operation) | -40 °F to 158 °F / (-40 °C to 70 °C) |
| Usage Environments | Outdoor |

Standards and Certifications

| | |
|--|------|
| Other Certifications and Compatibilities | NOM |
| California Proposition 65 | None |
| RoHS Certification | N/A |

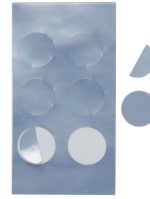
ACCESSORIES



6LV1352
Light Shield Accessory for EK4036S,
EK4436SM, K4000 Series Button Photocontrols



K43-WP-KIT
Wall Plate Kit for EK4036S, K4000 Series Button
Photocontrols



LGLBL
Lens Sticker Accessory for EK4000 & K4000
Series Photocontrols