

Mechanical Time Switch - 24-Hour Mechanical Time Switch, 208-277 VAC, 60Hz, DPST, Indoor Metal Enclosure, 1 Hour Interval

Item T104



PRODUCT DESCRIPTION

The T100 Series Mechanical Time Switch has proven it can stand the test of time. These dependable time switches can handle electrical loads up to 40 A per pole and allow for up to 12 ON/OFF operations per day. A manual override switch provides added convenience.

FEATURES

- ▶ Direct 24-hour control of most loads
- ▶ Up to 12 ON/OFF operations each day with minimum ON/OFF times of one hour
- ▶ Manual override
- ▶ One ON and one OFF tripper included
- ▶ Can be installed in most Intermatic enclosures

APPLICATIONS

- ▶ Timing/Scheduling ON/OFF
- ▶ Indoor Lighting Control

TECHNICAL DATA

General	
Model Number	T104
Description	24-Hour Mechanical Time Switch, 208-277 VAC, 60Hz, DPST, Indoor Metal Enclosure, 1 Hour Interval
UPC Code	078275000025
Brand	Intermatic
Country of Origin (Intermatic)	MEXICO
Warranty Period	1-Year limited

Control Specifications	
Minimum ON/OFF Times	1 hour
Maximum ON/OFF Operations	12
Skipper Wheel	Not Included
Timing Interval	1 hr
Operation Mode	24 hour
Has Manual Override	Yes
Application Compatibilities	LED; HID

Mechanical Specifications	
Enclosure Type	Indoor type 1 metal
Number of Trippers Included	1 ON/1 OFF

Dimensions	
Product Dimensions (H x W x D) in	7.875 x 5.125 x 3.437 in
Wire Size Min	#14 AWG
Wire Size Max	#8 AWG
Knockout Dimensions Bottom	(2) combination 1/2" - 3/4"
Knockout Dimensions Back	(1) combination 1/2" - 3/4"

Material Specifications	
Color	Gray
Load Ratings	
Tungsten Range(s)	40 A, 120-277 VAC, 60 Hz
Electronic Ballast	16 A
Electronic Ballast Load Ratings Ranges	16 A, 120-277 VAC
Inductive	40 A, 277 VAC, 60 Hz; 40 A, 240 VAC, 60 Hz; 40 A, 208 VAC, 60 Hz; 40 A, 120 VAC, 60 Hz
Resistive Load Ratings Ranges	40 A, 120-480 VAC, 60 Hz
Inductive Load Ratings Ranges	40 A, 120-277 VAC, 60 Hz
Pilot Duty Load Ratings Ranges	1000 VA, 120-277 VAC, 60 Hz
Motor Load Ratings Ranges	2 HP, 24 FLA @ 120 VAC, 60 Hz; 5 HP, 28 FLA @ 240 VAC, 60 Hz
Electrical Specifications	
Wiring Option	Terminals
Input Voltage Range(s)	208-277 VAC, 60 Hz
Number of Circuits	1
Switch Type	DPST
Maximum Power Consumption (W)	3 W
Hz	60
Packaging	
Shipping Weight (lbs)	2.744
Unit Carton Dimensions (H x W x L) in	8.25 x 3.5 x 5.5 in
Environmental Specifications	
Temperature (operation)	-40 °F to 130 °F / (-40 °C to 54 °C)
Standards and Certifications	
UL Certification	cULus
CSA Certification	cCSAus
Other Certifications and Compatibilities	LED; Green Energy
UL File Number	UL917
California Proposition 65	Lead
RoHS Certification	N/A

ACCESSORIES



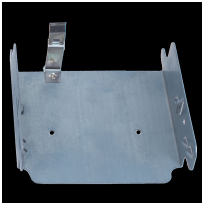
156T1978AMX
1 Set of ON/OFF Trippers for T100, T7000, and WH40



156T1978A
Extra/replacement trippers 1 ON and 2 OFF



156T1978AD12
12 Pack of 156T1978A Trippers for T100, T7000, and WH40



22T338GR
Mounting Bracket for Intermatic Standardized Timer Mechanisms



124T1952
Insulator for Double-Pole Time Switch (T103, T104, T105, T173, T174, T175, T176, T185, WH40)



WG1571-10D
MOTOR-BOXED, 125V 50HZ



WG1573-10DMX
208-277 VAC, 60 Hz Motor for T102, T104, T106, T172, T174, WH40



156T1957A
Skipper Screws (3 per package)