

Weatherproof Cover - Plastic In-Use Weatherproof Cover, Vertical Mount, Double-Gang, GFCI & Duplex Single-Gang Horizontal or Vertical applications, 2.25" Clear

Item WP1020C



PRODUCT DESCRIPTION

Plastic In-Use Weatherproof Covers are easy to install and include a gasket, mounting screws, base, cover assembly, and 2 inserts to meet the needs of vertical or horizontal Single-Gang GFCI & Duplex applications.

FEATURES

- ▶ Complies with 2020 NEC Article 314.15 for damp and wet locations
- ▶ UL Certified for Type 3R outdoor enclosures
- ▶ Meets requirements for cold impact testing: -60° F (-51° C)
- ▶ Heavy-duty UV stabilized polycarbonate cover, mounting base and inserts
- ▶ 1/8" (3 mm) thick neoprene gasket with slits for mounting screws
- ▶ WP101 Duplex & WP102 GFCI single-gang application inserts included.
- ▶ Inserts can be rotated to fit vertical or horizontal applications.
- ▶ Fits standard square 4" wall boxes with single-gang applications.
- ▶ Max cord size: (2) #14 AWG or (1) #12 AWG, WP1050 (2) #14 AWG or (1) #10 AWG
- ▶ Warranty: 1-year limited

APPLICATIONS

- ▶ Receptacle Protection

TECHNICAL DATA

General	
Model Number	WP1020C
Description	Plastic In-Use Weatherproof Cover, Vertical Mount, Double-Gang, GFCI & Duplex Single-Gang Horizontal or Vertical applications, 2.25" Clear
UPC Code	078275003224
Brand	Intermatic
Country of Origin (Intermatic)	MEXICO
Warranty Period	1-Year limited
Mechanical Specifications	
Number of Included Inserts	2
Insert Types Included	WP101; WP102
Hinge Direction	Vertical
Is Extra-Duty Rated	No
Number of Gangs	Double
Electrical Box Shape	Square
Dimensions	
Product Dimensions (H x W x D) in	5.5 x 5 x 2.25 in
Accepted Cord Size Max	2x14 AWG; 1x12 AWG
Box Type	Double
Material Specifications	
Color	Clear
Weatherproof Cover Material	UV Stabilized Plastic



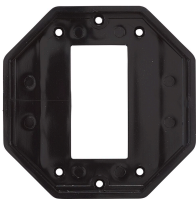
Packaging	
Shipping Weight (lbs)	0.4
Unit Carton Dimensions (H x W x L) in	3.133 x 5.253 x 5.503 in

Standards and Certifications	
UL Certification	cULus
California Proposition 65	None
RoHS Certification	N/A

ACCESSORIES



WP101
Double-Gang Duplex Insert



WP102
Double-Gang GFCI Insert