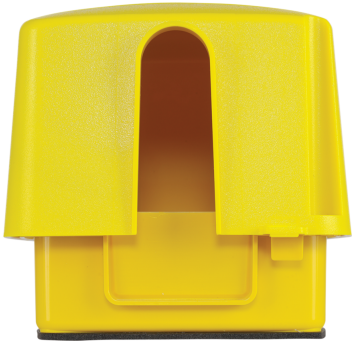


Weatherproof Cover - Extra-Duty Plastic In-Use Weatherproof Cover, Double-Gang, Vrt, 4.75" Yellow

Item WP5500Y



FEATURES

- ▶ Complies with 2020 NEC Article 406.9 (B)(1) for wet locations and extra-duty applications
- ▶ CEC Article 26-702 Compliant
- ▶ UL Certified for Type 3R outdoor enclosures
- ▶ Meets requirements for cold impact testing: -60° F (-51° C)
- ▶ Heavy-duty UV stabilized polycarbonate cover, mounting base, and inserts
- ▶ 1/8" (3 mm) thick, pre-adhered neoprene gasket with slits for mounting screws
- ▶ Lockable hasp: All models accept up to 1/4" (6 mm) dia. shank
- ▶ Impact rated: 12 lb. impact test to ensure cover remains intact
- ▶ Reinforced hinge pin designed to exceed 40 lb. hinge hang/stress test
- ▶ Warranty: 1-year limited

APPLICATIONS

- ▶ Receptacle Protection

TECHNICAL DATA

General	
Model Number	WP5500Y
Description	Extra-Duty Plastic In-Use Weatherproof Cover, Double-Gang, Vrt, 4.75" Yellow
UPC Code	078275146174
Brand	Intermatic
Country of Origin (Intermatic)	MEXICO
Warranty Period	1-Year limited
Mechanical Specifications	
Number of Included Inserts	6
Insert Types Included	WP107; WP213
Hinge Direction	Vertical
Is Extra-Duty Rated	Yes
Number of Gangs	Double
Electrical Box Shape	Square
Dimensions	
Lockable Hasp Maximum Diameter (in)	1/4
Lockable Hasp Maximum Diameter (mm)	6
Product Dimensions (H x W x D) in	6 x 6 5/8 x 4 3/4 in
Accepted Cord Size Max	1x6 AWG
Box Type	Double
Material Specifications	
Color	Yellow
Weatherproof Cover Material	UV Stabilized Plastic
Packaging	
Shipping Weight (lbs)	1.1

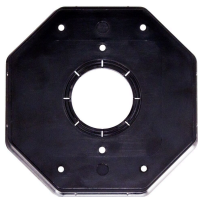


Unit Carton Dimensions (H x W x L) in	6.5 x 4 x 6.5 in
---------------------------------------	------------------

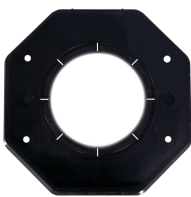
Standards and Certifications

UL Certification	cULus
CSA Certification	cCSAus
California Proposition 65	None

ACCESSORIES



WP107
Double-Gang Round Insert, 1 3/8", 1 5/8", 1 3/4"



WP213
Double-Gang Round Insert, 2 1/8", 2 5/8"