

Photocontrol - NIGHTFOX EK Series Premium Stem and Swivel Mount Electronic Photocontrol, 120-277 V

Item EK4236S



PRODUCT DESCRIPTION

NIGHTFOX EK Series Electronic Photocontrols are designed for permanent installation within outdoor-rated electrical enclosures, in-wall junction boxes, or lighting fixtures. This premium solution is suitable for use with high-efficiency, long-life LED luminaires. The unit mounts externally and requires a minimum enclosure aperture of 7/8" in diameter. Each control is equipped with 6" color-coded wire leads to ensure reliable and efficient installation.

FEATURES

- ▶ Non-drift silicon light sensor with IR filter
- ▶ DC relay with zero-crossing circuitry for extended life
- ▶ Conformal coated PCB
- ▶ 15-year design life
- ▶ Exceeds 10,000 ON/OFF switching cycles
- ▶ Fail ON mode
- ▶ Ideal for single or multifixture HID and LED installations (up to 1,650 W @ 277 VAC)
- ▶ 255 J MOV surge protection element
- ▶ 1/2"-14 NPSM threaded stem fits standard outlet boxes and wall packs for a minimum installation hole size of 7/8 inch diameter
- ▶ #18 AWG wire leads

APPLICATIONS

- ▶ Outdoor Lighting Control

TECHNICAL DATA

General	
Model Number	EK4236S
Description	NIGHTFOX EK Series Premium Stem and Swivel Mount Electronic Photocontrol, 120-277 V
UPC Code	078275146303
Brand	Intermatic
Country of Origin (Intermatic)	MEXICO
Warranty Period	8-Year limited
Control Specifications	
Sensor Time Delay	Instant ON; 2 sec to 5 sec OFF
Photocell Type	Silicon Diode
Photo Control Switch Type	Relay
Fail Mode	ON
Activation On	1.5 fc
Activation Off	4.5 fc
Photocontrol Type	Electronic
Application Compatibilities	LED; Incandescent; HID
Photocontrol Style	Stem and Swivel Mount
Photocontrol Sensor Location	Side
Dimensions	
Product Height (in)	5.625

Product Height (mm)	142.9
Product Width (in)	1.313
Product Width (mm)	33.3
Product Depth (in)	1.25
Product Depth (mm)	31.8
Wire Lead Length (in)	6
Wire Lead Length (mm)	152.4
Wire Size Max	#18 AWG

Material Specifications

Color	Gray
Housing Material	Polycarbonate

Load Ratings

Tungsten Range(s)	1000 W
Ballast Fluorescent Ranges	1800 VA
Electronic Ballast Load Ratings Ranges	6 A, 120-277 VAC, 50/60 Hz

Electrical Specifications

Wiring Option	Wire leads
Input Voltage Range(s)	120-277 VAC, 50/60 Hz (Nominal Voltage)
Operating Voltage Range(s)	102-305 VAC
Surge Protection Technology	255 J MOV, 5,000 A Surge
Hz	50/60

Packaging

Shipping Weight (lbs)	0.28
Unit Carton Dimensions (H x W x D) in	4.875 x 3 x 1.75 in

Operating Specifications

Expected Lifetime (Years)	15
Expected Lifetime (Operations)	10000

Environmental Specifications

Temperature (operation)	-40 °F to 158 °F / (-40 °C to 70 °C)
Usage Environments	Outdoor

Standards and Certifications

UL Certification	cULus
Other Certifications and Compatibilities	Title 20; ANSI C136.24; Green Energy +
California Proposition 65	DEHP
RoHS Certification	Y

ACCESSORIES



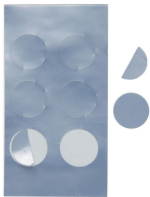
22LG0120
Light Guard Accessory for EK4000
Series Electronic Fix Mount
Photocontrols



6LV1352
Light Shield Accessory for EK4036S,
EK4436SM, K4000 Series Button
Photocontrols



K43-WP-KIT
Wall Plate Kit for EK4036S, K4000
Series Button Photocontrols



LGLBL
Lens Sticker Accessory for EK4000 &
K4000 Series Photocontrols