

**Weatherproof Cover** - Extra-Duty Plastic In-Use Weatherproof Cover, Double-Gang, Vrt, 2.25" Clear

Item WP5221C



**PRODUCT DESCRIPTION**

Plastic In-Use Weatherproof Covers are extra-duty rated and easy to install. Covers come with a gasket, mounting screws, base, cover assembly and inserts to meet the needs of a variety of applications.

**FEATURES**

- ▶ Complies with 2020 NEC Article 406.9 (B)(1) for wet locations and extra-duty applications
- ▶ CEC Article 26-702 Compliant
- ▶ UL Certified for Type 3R outdoor enclosures
- ▶ Meets requirements for cold impact testing: -60° F (-51° C)
- ▶ Heavy-duty UV stabilized polycarbonate cover, mounting base and inserts
- ▶ 1/8" (3 mm) thick, pre-adhered neoprene gasket with slits for mounting screws
- ▶ Lockable hasp: All models accept up to 1/4" (6 mm) dia. shank
- ▶ Impact rated: 12 lb. impact test to ensure cover remains intact
- ▶ Reinforced hinge pin designed to exceed 40 lb. hinge hang/stress test
- ▶ Warranty: 1-year limited

**APPLICATIONS**

- ▶ Receptacle Protection

**TECHNICAL DATA**

| General                             |   |
|-------------------------------------|---|
| Model Number                        | WP5221C   |
| Description                         | Extra-Duty Plastic In-Use Weatherproof Cover, Double-Gang, Vrt, 2.25" Clear |
| UPC Code                            | 078275147683  |
| Brand                               | Intermatic  |
| Country of Origin (Intermatic)      | MEXICO  |
| Warranty Period                     | 1-Year limited  |
| Mechanical Specifications           |   |
| Number of Included Inserts          | 6   |
| Insert Types Included               | WP101; WP102  |
| Hinge Direction                     | Vertical  |
| Is Extra-Duty Rated                 | Yes   |
| Number of Gangs                     | Double  |
| Electrical Box Shape                | Square  |
| Dimensions                          |   |
| Lockable Hasp Maximum Diameter (in) | 1/4   |
| Lockable Hasp Maximum Diameter (mm) | 6   |
| Product Dimensions (H x W x D) in   | 6 x 6.625 x 2.25 in   |
| Accepted Cord Size Max              | 2x12 AWG; 1x10 AWG  |
| Box Type                            | Double  |
| Material Specifications             |   |
| Color                               | Clear; Gray   |



|                             |                       |
|-----------------------------|-----------------------|
| Weatherproof Cover Material | UV Stabilized Plastic |
|-----------------------------|-----------------------|

Packaging

|                                       |                     |
|---------------------------------------|---------------------|
| Shipping Weight (lbs)                 | 0.5                 |
| Unit Carton Dimensions (H x W x L) in | 6.5 x 2.75 x 6.5 in |

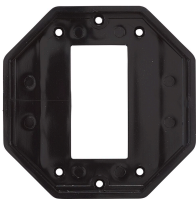
Standards and Certifications

|                           |       |
|---------------------------|-------|
| UL Certification          | cULus |
| California Proposition 65 | None  |
| RoHS Certification        | N/A   |

**ACCESSORIES**



WP101  
Double-Gang Duplex Insert



WP102  
Double-Gang GFCI Insert