

Photocontrol - Button Thermal Photocontrol, 208-277 V, Mexico Sales Only

Item K4023CMX



PRODUCT DESCRIPTION

These photocontrols install within lighting fixtures, post lamps, or in-wall boxes to provide dusk-to-dawn ON/OFF control of outdoor lighting.

FEATURES

- ▶ Mechanical bimetal switch with Cadmium Sulfide photocell
- ▶ Compact size fits into standard outlet box, post lamp, wall pack and other lighting fixtures
- ▶ Delay feature prevents unwanted OFF switching
- ▶ 3/8"-18 NPSM, 3/4" long stem with locking nut and washer gasket

APPLICATIONS

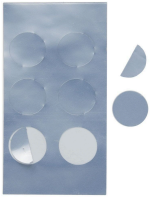
- ▶ Outdoor Lighting Control

TECHNICAL DATA

General	
Model Number	K4023CMX
Description	Button Thermal Photocontrol, 208-277 V, Mexico Sales Only
UPC Code	078275029576
Brand	Intermatic
Country of Origin (Intermatic)	MEXICO
Warranty Period	2-Year limited
Control Specifications	
Sensor Time Delay	30 sec to 90 sec
Photocell Type	Cadmium Sulfide
Photo Control Switch Type	Mechanical Bimetal
Fail Mode	ON
Activation On	1 to 5 fc
Activation Off	3 to 15 fc
Photocontrol Type	Thermal
Application Compatibilities	HID; Fluorescent; Incandescent
Photocontrol Style	Button
Photocontrol Sensor Location	Front
Dimensions	
Product Height (in)	1.813
Product Height (mm)	46
Product Width (in)	0.938
Product Width (mm)	23.8
Product Depth (in)	0.813
Product Depth (mm)	20.6
Wire Lead Length (in)	9
Wire Lead Length (mm)	228.6
Wire Size Max	#18 AWG

Material Specifications	
Color	Gray
Housing Material	Polycarbonate
Load Ratings	
Magnetic Ballast Range(s)	8.3 A, 1700-2300 VA
Tungsten Range(s)	15 A, 3100-4150 W
Electrical Specifications	
Wiring Option	Wire leads
Input Voltage Range(s)	208-277 VAC, 50/60 Hz
Hz	50/60
Packaging	
Shipping Weight (lbs)	0.25
Unit Carton Dimensions (H x W x D) in	4.88 x 1.75 x 3 in
Operating Specifications	
Expected Lifetime (Years)	5
Expected Lifetime (Operations)	3650
Environmental Specifications	
Temperature (operation)	-40 °F to 158 °F / (-40 °C to 70 °C)
Usage Environments	Outdoor
Standards and Certifications	
UL Certification	cULus
CSA Certification	cCSAus
Other Certifications and Compatibilities	Title 20; NOM
California Proposition 65	None
RoHS Certification	N/A

**ACCESSORIES**



LGLBL  
Lens Sticker Accessory for EK4000 & K4000  
Series Photocontrols



6LV1352  
Light Shield Accessory for EK4036S,  
EK4436SM, K4000 Series Button Photocontrols



K43-WP-KIT  
Wall Plate Kit for EK4036S, K4000 Series Button  
Photocontrols