

Photocontrol - Metal Stem Mount Thermal Photocontrol, 120 V

Item K4421M



PRODUCT DESCRIPTION

These photocontrols install on standard outdoor light fixtures and electrical boxes with 1/2"-14 NPSM thread or 7/8" knock-out holes for dusk-to-dawn ON/OFF control of outdoor lighting.

FEATURES

- ▶ Mechanical bimetal switch with Cadmium Sulfide photocell
- ▶ Delay feature prevents unwanted OFF switching
- ▶ Die-cast metal housing
- ▶ 1/2"-14 NPSM threaded stem
- ▶ Washer gasket and locking nut included
- ▶ #18 AWG, 9" wire leads

APPLICATIONS

- ▶ Outdoor Lighting Control

TECHNICAL DATA

General	
Model Number	K4421M
Description	Metal Stem Mount Thermal Photocontrol, 120 V
UPC Code	078275105997
Brand	Intermatic
Country of Origin (Intermatic)	MEXICO
Warranty Period	2-Year limited
Control Specifications	
Sensor Time Delay	30 sec to 90 sec
Photocell Type	Cadmium Sulfide
Photo Control Switch Type	Mechanical Bimetal
Fail Mode	ON
Activation On	1 to 5 fc
Activation Off	3 to 15 fc
Photocontrol Type	Thermal
Application Compatibilities	HID; Fluorescent; Incandescent
Photocontrol Style	Stem Mount
Photocontrol Sensor Location	Side
Dimensions	
Product Height (in)	3
Product Height (mm)	76.2
Product Width (in)	1.563
Product Width (mm)	39.7
Product Depth (in)	1.563
Product Depth (mm)	39.7
Wire Lead Length (in)	9
Wire Lead Length (mm)	228.6
Wire Size Max	#18 AWG

Stem Diameter	1/2"
Stem Thread Size	1/2" - 14
Stem Thread Type	NPSM

Material Specifications

Color	Gray
Housing Material	Die-Cast Zinc

Load Ratings

Incandescent Load Ratings Ranges	15 A
Magnetic Ballast Range(s)	8.3 A, 1000 VA
Tungsten Range(s)	15 A, 1800 W

Electrical Specifications

Wiring Option	Wire leads
Input Voltage Range(s)	120 VAC, 50/60 Hz
Switch Type	SPST
Hz	50/60

Packaging

Shipping Weight (lbs)	0.309
Unit Carton Dimensions (H x W x D) in	5 x 1.81 x 3.19 in

Operating Specifications

Expected Lifetime (Years)	5
Expected Lifetime (Operations)	3650

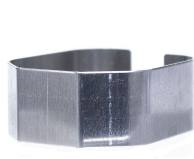
Environmental Specifications

Temperature (operation)	-40 °F to 158 °F / (-40 °C to 70 °C)
Usage Environments	Outdoor

Standards and Certifications

UL Certification	cULus
CSA Certification	cCSAus
Other Certifications and Compatibilities	Title 20; Green Energy
California Proposition 65	DEHP
RoHS Certification	N/A

ACCESSORIES



22LG116
Light Guard Accessory for K4100 Series, K4200 Series Thermal Photocontrols



K42-SW-A
Swivel Arm Accessory for EK4136S, K4100 Series Stem Mount Photocontrols



6LV1352
Light Shield Accessory for EK4036S, EK4436SM, K4000 Series Button Photocontrols