

Photocontrol - Wall Mount Thermal Photocontrol, 120 V

Item K4321C



PRODUCT DESCRIPTION

Intermatic's wall mount thermal-type photocontrol installs into standard outdoor single-gang electrical boxes. The photocontrol provides dusk-to-dawn lighting control. Compatible with Fluorescent, HID, and Incandescent bulbs.

FEATURES

- ▶ Mechanical bimetal switch with cadmium sulfide photocell
- ▶ Delay feature prevents unwanted ON/OFF switching
- ▶ Fail ON Mode
- ▶ Includes weatherproof wall plate and neoprene gasket

APPLICATIONS

- ▶ Outdoor Lighting Control

TECHNICAL DATA

| General | |
|--------------------------------|--|
| Model Number | K4321C |
| Description | Wall Mount Thermal Photocontrol, 120 V |
| UPC Code | 078275002036 |
| Brand | Intermatic |
| Country of Origin (Intermatic) | MEXICO |
| Warranty Period | 2-Year limited |
| Control Specifications | |
| Sensor Time Delay | 30 sec to 90 sec |
| Photocell Type | Cadmium Sulfide |
| Photo Control Switch Type | Mechanical Bimetal |
| Fail Mode | ON |
| Activation On | 1 to 5 fc |
| Activation Off | 3 to 15 fc |
| Photocontrol Type | Thermal |
| Application Compatibilities | HID; Fluorescent; Incandescent |
| Photocontrol Style | In-Wall |
| Photocontrol Sensor Location | Front |
| Dimensions | |
| Product Height (in) | 1.813 |
| Product Height (mm) | 46 |
| Product Width (in) | 0.938 |
| Product Width (mm) | 23.8 |
| Product Depth (in) | 0.811 |
| Product Depth (mm) | 20.6 |
| Wire Lead Length (in) | 9 |
| Wire Lead Length (mm) | 228.6 |
| Wire Size Max | #18 AWG |

| | |
|------------------|-----------|
| Stem Diameter | 3/8" |
| Stem Thread Size | 3/8" - 18 |
| Stem Thread Type | NPSM |

Material Specifications

| | |
|------------------|---------------|
| Color | Gray |
| Housing Material | Polycarbonate |

Load Ratings

| | |
|----------------------------------|----------------|
| Incandescent Load Ratings Ranges | 15 A |
| Magnetic Ballast Range(s) | 8.3 A, 1000 VA |
| Tungsten Range(s) | 15 A, 1800 W |

Electrical Specifications

| | |
|------------------------|-------------------|
| Wiring Option | Wire leads |
| Input Voltage Range(s) | 120 VAC, 50/60 Hz |
| Switch Type | SPST |
| Hz | 50/60 |

Packaging

| | |
|---------------------------------------|--------------------|
| Shipping Weight (lbs) | 0.375 |
| Unit Carton Dimensions (H x W x D) in | 4.88 x 1.75 x 3 in |

Operating Specifications

| | |
|--------------------------------|------|
| Expected Lifetime (Years) | 5 |
| Expected Lifetime (Operations) | 3650 |

Environmental Specifications

| | |
|-------------------------|--------------------------------------|
| Temperature (operation) | -40 °F to 158 °F / (-40 °C to 70 °C) |
| Usage Environments | Outdoor |

Standards and Certifications

| | |
|--|------------------------|
| UL Certification | cULus |
| CSA Certification | cCSAus |
| Other Certifications and Compatibilities | Title 20; Green Energy |
| California Proposition 65 | DEHP |
| RoHS Certification | N/A |

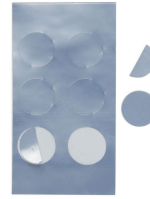
ACCESSORIES



6LV1352
Light Shield Accessory for EK4036S,
EK4436SM, K4000 Series Button Photocontrols



K43-WP-KIT
Wall Plate Kit for EK4036S, K4000 Series Button
Photocontrols



LGLBL
Lens Sticker Accessory for EK4000 & K4000
Series Photocontrols