

Photocontrol - Stem and Swivel Mount Thermal Photocontrol, 120 V, Mexico Sales Only

Item K4221CMX



PRODUCT DESCRIPTION

These photocontrols are provided with a swivel arm for easy and flexible installation to standard outdoor light fixtures or electrical boxes.

FEATURES

- ▶ Mechanical bimetal switch with Cadmium Sulfide photocell
- ▶ Delay feature prevents unwanted OFF switching
- ▶ High strength, UV resistant plastic housing
- ▶ Swivel with 1/2"-14 NPSM threaded stem
- ▶ Washer gasket and locking nut included
- ▶ #18 AWG, 6" wire leads

APPLICATIONS

- ▶ Outdoor Lighting Control

TECHNICAL DATA

General	
Model Number	K4221CMX
Description	Stem and Swivel Mount Thermal Photocontrol, 120 V, Mexico Sales Only
UPC Code	078275002029
Brand	Intermatic
Country of Origin (Intermatic)	MEXICO
Warranty Period	2-Year limited
Control Specifications	
Sensor Time Delay	30 sec to 90 sec
Photocell Type	Cadmium Sulfide
Photo Control Switch Type	Mechanical Bimetal
Fail Mode	ON
Activation On	1 to 5 fc
Activation Off	3 to 15 fc
Photocontrol Type	Thermal
Application Compatibilities	HID; Fluorescent; Incandescent
Photocontrol Style	Stem and Swivel Mount
Photocontrol Sensor Location	Side
Dimensions	
Product Height (in)	5
Product Height (mm)	139.7
Product Width (in)	1.563
Product Width (mm)	39.7
Product Depth (in)	1.563
Product Depth (mm)	39.7
Wire Lead Length (in)	9

Wire Lead Length (mm)	228.6
Wire Size Max	#18 AWG

Material Specifications

Color	Gray
Housing Material	Polycarbonate

Load Ratings

Magnetic Ballast Range(s)	8.3 A, 1000 VA
Tungsten Range(s)	15 A, 1800 W

Electrical Specifications

Wiring Option	Wire leads
Input Voltage Range(s)	120 VAC, 50/60 Hz
Hz	50/60

Packaging

Shipping Weight (lbs)	0.299
Unit Carton Dimensions (H x W x D) in	4.88 x 1.75 x 3 in

Operating Specifications

Expected Lifetime (Years)	5
Expected Lifetime (Operations)	3650

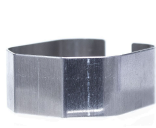
Environmental Specifications

Temperature (operation)	-40 °F to 158 °F / (-40 °C to 70 °C)
Usage Environments	Outdoor

Standards and Certifications

UL Certification	cULus
CSA Certification	cCSAus
Other Certifications and Compatibilities	NOM; Title 20
California Proposition 65	None
RoHS Certification	N/A

ACCESSORIES



22LG116
Light Guard Accessory for K4100 Series, K4200 Series Thermal Photocontrols



K42-SW-A
Swivel Arm Accessory for EK4136S, K4100 Series Stem Mount Photocontrols



6LV1352
Light Shield Accessory for EK4036S, EK4436SM, K4000 Series Button Photocontrols