

Photocontrol - Stem and Swivel Mount Thermal Photocontrol, 120 V

Item K4221C



PRODUCT DESCRIPTION

These photocontrols are provided with a swivel arm for easy and flexible installation to standard outdoor light fixtures or electrical boxes.

FEATURES

- ▶ Mechanical bimetal switch with Cadmium Sulfide photocell
- ▶ Delay feature prevents unwanted OFF switching
- ▶ High strength, UV resistant plastic housing
- ▶ Swivel with 1/2"-14 NPSM threaded stem
- ▶ Washer gasket and locking nut included
- ▶ #18 AWG, 6" wire leads

APPLICATIONS

- ▶ Outdoor Lighting Control

TECHNICAL DATA

General	
Model Number	K4221C
Description	Stem and Swivel Mount Thermal Photocontrol, 120 V
UPC Code	078275002029
Brand	Intermatic
Country of Origin (Intermatic)	MEXICO
Warranty Period	2-Year limited
Control Specifications	
Sensor Time Delay	30 sec to 90 sec
Photocell Type	Cadmium Sulfide
Photo Control Switch Type	Mechanical Bimetal
Fail Mode	ON
Activation On	1 to 5 fc
Activation Off	3 to 15 fc
Photocontrol Type	Thermal
Application Compatibilities	HID; Fluorescent; Incandescent
Photocontrol Style	Stem and Swivel Mount
Photocontrol Sensor Location	Side
Dimensions	
Product Height (in)	5
Product Height (mm)	139.7
Product Width (in)	1.563
Product Width (mm)	39.7
Product Depth (in)	1.563
Product Depth (mm)	39.7
Wire Lead Length (in)	6

Wire Lead Length (mm)	152
Wire Size Max	#18 AWG
Stem Diameter	1/2"
Stem Thread Size	1/2" - 14
Stem Thread Type	NPSM

Material Specifications	
Color	Gray
Housing Material	Polycarbonate

Load Ratings	
Incandescent Load Ratings Ranges	15 A
Magnetic Ballast Range(s)	8.3 A, 1000 VA
Tungsten Range(s)	15 A, 1800 W

Electrical Specifications	
Wiring Option	Wire leads
Input Voltage Range(s)	120 VAC, 50/60 Hz
Switch Type	SPST
Hz	50/60

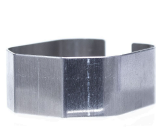
Packaging	
Shipping Weight (lbs)	0.299
Unit Carton Dimensions (H x W x D) in	4.88 x 1.75 x 3 in

Operating Specifications	
Expected Lifetime (Years)	5
Expected Lifetime (Operations)	3650

Environmental Specifications	
Temperature (operation)	-40 °F to 158 °F / (-40 °C to 70 °C)
Usage Environments	Outdoor

Standards and Certifications	
UL Certification	cULus
CSA Certification	cCSAus
Other Certifications and Compatibilities	Title 20; Green Energy
California Proposition 65	DEHP
RoHS Certification	N/A

ACCESSORIES



22LG116
Light Guard Accessory for K4100 Series, K4200 Series
Thermal Photocontrols



K42-SW-A
Swivel Arm Accessory for EK4136S, K4100 Series Stem
Mount Photocontrols



6LV1352
Light Shield Accessory for EK4036S, EK4436SM, K4000
Series Button Photocontrols