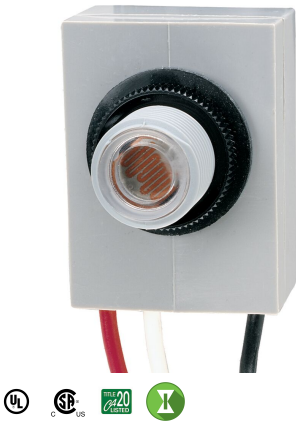


Photocontrol - Button Thermal Photocontrol, 208-277 V

Item K4023C



PRODUCT DESCRIPTION

These photocontrols install within lighting fixtures, post lamps, or in-wall boxes to provide dusk-to-dawn ON/OFF control of outdoor lighting.

FEATURES

- ▶ Mechanical bimetal switch with Cadmium Sulfide photocell
- ▶ Compact size fits into standard outlet box, post lamp, wall pack and other lighting fixtures
- ▶ Delay feature prevents unwanted OFF switching
- ▶ 3/8"-18 NPSM, 3/4" long stem with locking nut and washer gasket

APPLICATIONS

- ▶ Outdoor Lighting Control

TECHNICAL DATA

General	
Model Number	K4023C
Description	Button Thermal Photocontrol, 208-277 V
UPC Code	078275029576
Brand	Intermatic
Country of Origin (Intermatic)	MEXICO
Warranty Period	2-Year limited
Control Specifications	
Sensor Time Delay	30 sec to 90 sec
Photocell Type	Cadmium Sulfide
Photo Control Switch Type	Mechanical Bimetal
Fail Mode	ON
Activation On	1 to 5 fc
Activation Off	3 to 15 fc
Photocontrol Type	Thermal
Application Compatibilities	HID; Fluorescent; Incandescent
Photocontrol Style	Button
Photocontrol Sensor Location	Front
Dimensions	
Product Height (in)	1.813
Product Height (mm)	46
Product Width (in)	0.938
Product Width (mm)	23.8
Product Depth (in)	0.811
Product Depth (mm)	20.6
Wire Lead Length (in)	9
Wire Lead Length (mm)	228.6

Wire Size Max	#18 AWG
Stem Diameter	3/8"
Stem Thread Size	3/8" - 18
Stem Thread Type	NPSM

Material Specifications

Color	Gray
Housing Material	Polycarbonate

Load Ratings

Incandescent Load Ratings Ranges	15 A
Magnetic Ballast Range(s)	8.3 A, 1700-2300 VA
Tungsten Range(s)	15 A, 3100-4150 W

Electrical Specifications

Wiring Option	Wire leads
Input Voltage Range(s)	208-277 VAC, 50/60 Hz
Switch Type	SPST
Hz	50/60

Packaging

Shipping Weight (lbs)	0.25
Unit Carton Dimensions (H x W x D) in	4.88 x 1.75 x 3 in

Operating Specifications

Expected Lifetime (Years)	5
Expected Lifetime (Operations)	3650

Environmental Specifications

Temperature (operation)	-40 °F to 158 °F / (-40 °C to 70 °C)
Usage Environments	Outdoor

Standards and Certifications

UL Certification	cULus
CSA Certification	cCSAus
Other Certifications and Compatibilities	Title 20; Green Energy
California Proposition 65	DEHP
RoHS Certification	N/A

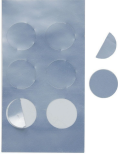
ACCESSORIES



6LV1352  
Light Shield Accessory for EK4036S, EK4436SM, K4000 Series Button Photocontrols



K43-WP-KIT  
Wall Plate Kit for EK4036S, K4000 Series Button Photocontrols



LGLBL  
Lens Sticker Accessory for EK4000 & K4000 Series Photocontrols