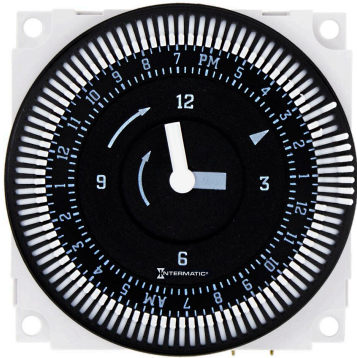


Graesslin Mechanical Time Switch - 24-Hour 120V Electromechanical Panel Mount Timer Module, 15 Minute Intervals, 21A, SPDT

Item FM1STUZ-120U



PRODUCT DESCRIPTION

The FM1 series timer modules are designed to be integrated inside of a machine control panel, circuit board, or other equipment. They are a simple and low cost alternative for applications that do not require more than 21 A or 2 HP, 240 VAC. The FM1 is designed for 24-hour or 7-day control or overriding a functional typical state of a heating, ventilation, refrigeration, lighting, security, or pump system. The FM1 series is ideal for 12, 24 VAC/VDC, 120 or 208/240VAC single-phase general applications.

FEATURES

- ▶ 21 A SPDT Switch
- ▶ Captive trippers with 15-minute intervals on 24-hour models and 2-hour intervals on 7-day models
- ▶ 72-hour carry-over battery backup on Q models
- ▶ Noise immune – ideal for robust applications
- ▶ Synchronous drive or quartz drive Q models with self-recharging battery backup
- ▶ True clock face, easy-to-set
- ▶ Available with or without override
- ▶ Compact size
- ▶ Clear plastic cover (DC-FME-A), sold separately
- ▶ Standalone or with indoor/outdoor enclosure, sold separately

APPLICATIONS

- ▶ Refrigeration Merchandiser
- ▶ Air Movement & Ventilation
- ▶ Aeration
- ▶ Septic Treatment
- ▶ Generator Exercising

TECHNICAL DATA

General	
Model Number	FM1STUZ-120U
Description	24-Hour 120V Electromechanical Panel Mount Timer Module, 15 Minute Intervals, 21A, SPDT
UPC Code	078275152816
Brand	Domestic Intermatic
Country of Origin (Intermatic)	MEXICO
Warranty Period	1-Year limited
Control Specifications	
Maximum Cycle Time	24 hrs
Timing Interval	15 min
Clock Drive Type	Synchronous
Mechanism Type	Electromechanical
Has Captive Trippers	Yes
Has Real-time Clock Face	Yes
Application Compatibilities	Incandescent; Fluorescent; CFL; LED
Mechanical Specifications	
Mounting Options	Panel
Number of Trippers Included	96

Dimensions

Product Dimensions (H x W x D) in	2.359 x 2.359 x 1.25 in
-----------------------------------	-------------------------

Material Specifications

Color	Black
-------	-------

Load Ratings

Motor Load Ratings Ranges	1 HP, 120 VAC; 2 HP, 250 VAC
---------------------------	------------------------------

Electrical Specifications

Maximum Power Consumption (VA)	1
Wiring Option	1/4" Quick connect terminals
Switch Type	SPDT

Display and Format

Shortest switching time	ON/OFF 15 minutes
-------------------------	-------------------

Packaging

Shipping Weight (lbs)	0.22
Unit Carton Dimensions (H x W x L) in	2.25 x 3.25 x 3.25 in

Environmental Specifications

Operating Humidity	0 to 95%, Non-condensing
Temperature (operation)	-40 °F to 185 °F / (-40 °C to 85 °C)

Standards and Certifications

UL Certification	cRUus
CSA Certification	cCSAus
Other Certifications and Compatibilities	cRUus; Green Energy
UL File Number	E10694
CSA File Number	LR3730
California Proposition 65	None
RoHS Certification	N/A

ACCESSORIES



DC-FME-A  
Clear Dust Cover for Electronic Panel Mount  
Timers



FM-SU  
FM1 Surface/DIN Rail Kit



FM-FU  
FM1 Flush Mount Housing Kit



E200  
Case-Outdoor, Type 3R Plastic, Gray



E150  
Case-Indoor, Type 1 Plastic, Gray