

Electromechanical Defrost Timer - 24-Hour Electromechanical Defrost Timer

Item DTAV40Q



PRODUCT DESCRIPTION

For electric heat, hot gas or compressor shutdown defrost. The DTAV40 Series Auto Voltage Defrost Timer is applicable to air defrost (compressor shutdown) and electric or hot gas defrost systems where the defrost cycle is terminated by the timer. If the coil is frost-free, the timer can also be terminated by temperature or pressure switches before the programmed defrost termination time has been reached. The time termination functions as a fail-safe and terminates the defrost cycle if the temperature or pressure switch fails to do so.

FEATURES

- ▶ Adaptive Defrost upgradeable (DTAV40, DTAV40M only) (See ICUBE)
- ▶ DTAV40 Series replaces over 40 competitive models
- ▶ 40 A, 2 HP Rating
- ▶ Auto-voltage automatically adjusts between 120 and 240 VAC
- ▶ Q model features self-recharging battery backup with 72-hour carry-over
- ▶ Can mount in an existing enclosure – no tools required for installation
- ▶ Moisture resistant conformal-coated board
- ▶ LED indicators for defrost and refrigeration cycles
- ▶ Defrost cycles are programmed independently
- ▶ Real-time clock face for quick, easy and accurate setting

APPLICATIONS

- ▶ Walk-in Refrigeration Cooler/Freezer

TECHNICAL DATA

General	
Model Number	DTAV40Q
Description	24-Hour Electromechanical Defrost Timer
UPC Code	078275127685
Brand	Domestic Intermatic
Country of Origin (Intermatic)	MEXICO
Warranty Period	1-Year limited
Control Specifications	
Minimum ON/OFF Times	15 min
Maximum ON/OFF Times	23 hours, 45 min
Time Initiation	Time
ON/OFF Operations	48
Clock Drive Type	Quartz
Backup Restoration Time	70 Hours
Backup Type	72-hour Carry-over; Battery; Self-recharging
Battery Type	Li-Ion
Time Termination	Temperature; Pressure; Time
Backup Protection Time	72 Hours
Battery Service Type	Rechargeable
Mechanism Type	Electromechanical
Defrost LED Indicator	Red
Has Captive Trippers	Yes

Has Real-time Clock Face	Yes
Application Compatibilities	Commercial Refrigeration; Walk-in Freezer; Walk-in Cooler

Mechanical Specifications

Mounting Options	Bracket
Enclosure Type	Outdoor type 3R plastic

Dimensions

Wire Size Max	#8 AWG
---------------	--------

Material Specifications

Color	Gray
-------	------

Load Ratings

Resistive Load Ratings Ranges	40 A, 120-240 VAC
-------------------------------	-------------------

Electrical Specifications

Voltage Selection Type	Auto-Voltage
Wiring Option	Screw box lug terminals up to one #8 AWG wire
Input Voltage Range(s)	120/240 VAC, 50/60 Hz
Switch Type	1 SPDT, 1 NC SPST
Electrical Life	50,000 operations at full load
Hz	50/60

Packaging

Shipping Weight (lbs)	1.896
Unit Carton Dimensions (H x W x L) in	10.125 x 3.938 x 6.75 in

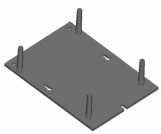
Environmental Specifications

Quartz Temperature Min (°C)	-20
Quartz Temperature Min (°F)	-4
Quartz Temperature Max (°F)	131
Quartz Temperature Max (°C)	55
Operating Humidity	0-95% RH, Non-condensing
Temperature (operation)	0 °F to 0 °F / (0 °C to 0 °C)

Standards and Certifications

RoHS Directive	2011/65/EU.
UL Certification	cULus
Other Certifications and Compatibilities	Green Energy
UL File Number	#E10694
California Proposition 65	None
RoHS Certification	Y

ACCESSORIES



DT-B
Defrost Timer Bracket