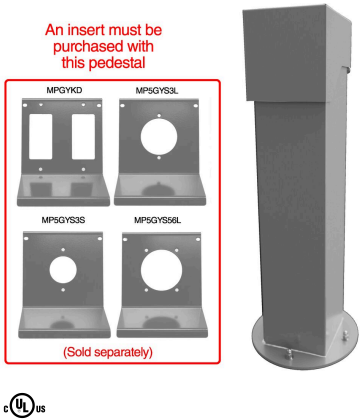


# Weather Proof Cover - 5x5, 24" Double-Gang Hinge Top Pedestal, Gray

Item OP5GY24



## PRODUCT DESCRIPTION

Provides convenient access to power in shared spaces with a heavy-duty power pedestal from Intermatic. These easy-to-install, low-maintenance cULus 1773 approved solutions are built of heavy gauge 304L stainless steel with 14 GA uprights, powder-coated and designed to withstand the harshest outdoor environments. Each power pedestal includes a self-closing, lockable cover for added security. Ideal for retrofit and new construction applications, they're a simple way to support everyday power needs (e.g., phone charging) and facility operations (e.g., holiday lighting).

## FEATURES

- ▶ OP5XXXX Double-Gang Pedestals require a selection of an MPXXXXX Device Mounting Plate that meets your application needs. (Order Separately)
- ▶ Welded construction, built of heavy gauge 304L stainless steel with 14 GA uprights, powder-coated and designed to withstand the harshest outdoor environments.
- ▶ Welded construction, built of heavy gauge 304L stainless steel with 14 GA uprights, powder-coated and designed to withstand the harshest outdoor environments.
- ▶ Designed for quick and easy installation and low maintenance.
- ▶ Model accommodates 20 A to 60 A devices.
- ▶ Secure - in-use, tamper-resistant with self-closing reinforced hinge-top and hasp accepting up to 1/4" lock.

## APPLICATIONS

- ▶ Power Pedestals

## TECHNICAL DATA

General	
Model Number	OP5GY24
Description	5x5, 24" Double-Gang Hinge Top Pedestal, Gray
UPC Code	078275158054
Brand	Intermatic
Country of Origin (Intermatic)	CANADA
Warranty Period	2-Year limited
Mechanical Specifications	
Hinge Direction	Vertical
Base	Surface Mount
Device Type Mounting Plate	Order separately - See accessories on product page
Mounting Plate Included	No
Ground Wire Max	4 GA Copper Solid
Ground Wire Min	14 GA Copper Solid
Number of Gangs	Double
Max Load	20 A; 30-60 A (must be water-tight)
Pedestal Type	Hinge-Top
Dimensions	
Lockable Hasp Maximum Diameter (in)	0.25
Lockable Hasp Maximum Diameter (mm)	6.35
Product Dimensions (H x W x D) in	24 x 2.8 x 6.375
Pedestal Height	24"

Material Specifications

Color	Gray
Base Material	304L 3/16" Powder Coated Stainless Steel
Body Material	304L 14GA Powder Coated Stainless Steel
UV Resiliant Outdoor Enclosure	Yes

Packaging

Shipping Weight (lbs)	16
Unit Carton Dimensions (H x W x L) in	27 x 11 x 11 in
Product Weight (lbs)	15.5
Product Weight (kg)	7.03

Standards and Certifications

UL Certification	UL Listed Mounting Pedestal E536618
UL Standard	UL1773
California Proposition 65	None
RoHS Certification	Y

ACCESSORIES



MP5GYD  
20 A, Double-Gang Mounting Plate, Gray



MP5GYS3S  
30 A, 1-9/16" Mounting Plate, Gray



MP5GYS3L  
30 A, 2-1/8" Mounting Plate, Gray



MP5GYS56L  
50/60 A, Mounting Plate, Gray